

**Pride in  
Pennine**

Quality-Driven  
Responsible  
Compassionate

The Pennine Acute Hospitals **NHS**  
NHS Trust

# Service Transformation Update

**Sandra Good**

**Director of Strategy & Commercial Development**

**22<sup>nd</sup> March 2016**



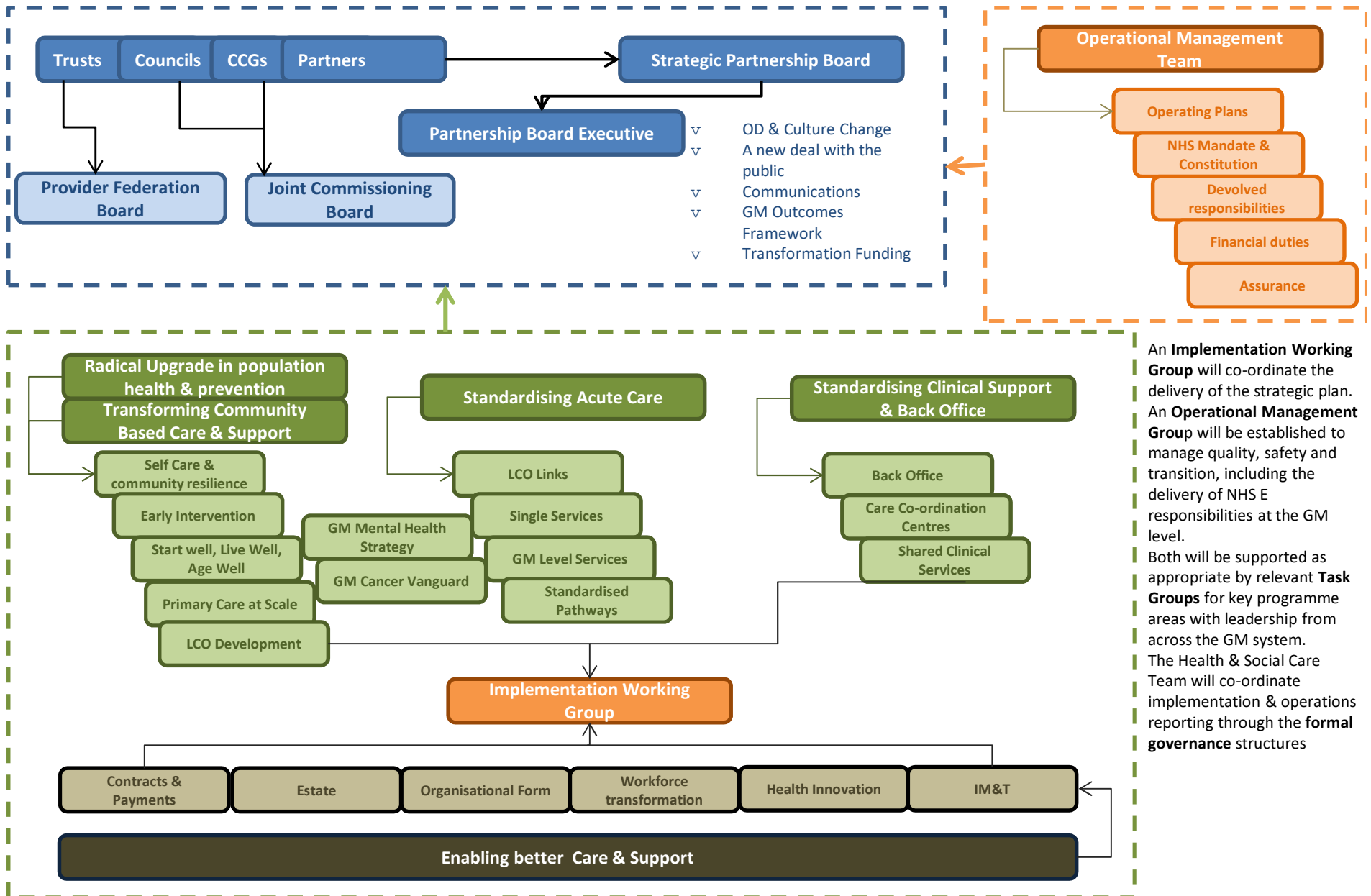
# Content

- GM Devolution current position
- North East Sector Transformation Overview
  - Healthier Together
  - Clinical Service Transformation
  - Locality plans
- Next steps
- Discussion

# Greater Manchester Devolution

- GM Strategic Plan launched December 2015
- 1<sup>st</sup> April 2016 Go Live
- Locality Plans Agreed March 2016
- Public engagement in progress
- Local implementation plans in progress
- GM Transformation Programmes in development
- Established Governance arrangements

# Headline Governance & Delivery



An **Implementation Working Group** will co-ordinate the delivery of the strategic plan. An **Operational Management Group** will be established to manage quality, safety and transition, including the delivery of NHS E responsibilities at the GM level. Both will be supported as appropriate by relevant **Task Groups** for key programme areas with leadership from across the GM system. The Health & Social Care Team will co-ordinate implementation & operations reporting through the **formal governance** structures

# North East Sector Transformation Oversight Review

- Commissioner led
- Brings together the elements of transformation work across GM and the north east sector that impact on the Trust including:
  - Healthier Together, Clinical Services Transformation, 4 Locality Plans (Single Hospital Service for the City, LCO, ACMO etc)
- Support single consultation in 2016



# Healthier Together

- 3 year transformation programme with public consultation 2015
- Judicial Review Outcome January 2016
- Healthier Together Programme Board re-established with sectors leading on implementation
- Royal Oldham confirmed as the Specialist Site
- North Manchester and Fairfield General Hospitals confirmed as related local sites. Rochdale Infirmary out of scope
- Healthier Together Standards to be implemented

# Clinical Service Transformation

- Clinically led, externally supported, commissioner engaged initiative
- Clinical case for Change (CCfC) outlines rationale for change and development of options for services
- CCfC developed with clinical teams
- Based on series of transformation principles
- Supports the development of the Strategic Outline Case (SOC) for Capital
- Delivers a clinically and financially sustainable organisation from 2019/20



# 10 Transformation Principles

- 1) To improve and maintain quality
- 2) To improve patient outcomes and the patient experience
- 3) To increase standardisation and reduce variation
- 4) To increase specialisation and consolidation
- 5) To increase efficiency, reduce waste and secure best value
- 6) To increase use of technology to support and enhance clinical services
- 7) To maximise opportunities to move inpatients to day cases to out-of-hospital care in community settings
- 8) To adopt new ways of working
- 9) To increase integrated and partnership working
- 10) To build on the proposals set out under GM Healthier Together

## Locality Plans

- Locality Plans have been developed for Manchester, Bury, Oldham and Rochdale
- Final approval of the plans by March 2016
- Priorities and transformation themes identified for each locality
- Focus on prevention and self care
- New models of service delivery explored e.g. Local Care Organisations, Accountable Care Management Organisations, shared services

Pride in  
Pennine

Quality-Driven  
Responsible  
Compassionate

The Pennine Acute Hospitals   
NHS Trust

# Manchester



# City of Manchester Single Hospital Service

- Project initiated by Manchester Health and Wellbeing Board to scope a single hospital service for the city of Manchester
- Partnership between CMFT, UHSM and PAT
- Independent Chair, externally supported
- Takes account of existing work e.g. Healthier Together and North East Sector Transformation Programme (CST)
- 2 phase approach

# Phase 1

- Analysis of the existing service portfolios of all three trusts
- Assess against all six benefits assessment themes
- Consider eight exemplar services including cardiac, respiratory, secondary paediatrics, obstetrics, radiology (interventional radiology), infectious diseases, critical care and rheumatology plus back office functions
- Determine the potential benefits for a fully-aligned single hospital service for Manchester
- Reports April 2016



## Phase 2

- Considers potential options for governance and organisational arrangements from UK and international examples
- Appraise options and identify preferred options to deliver benefits identified in Phase 1
- Reports June 2016



# Local Care Organisation

- Manchester Provider Group tasked with the delivery of the One Team model and development of a Local care Organisation (LCO)
- LCO work is in development with scoping workshops held with a range of providers
- Initial core members to be the three GP Federations, three acute trusts (CMFT, PAT, UHSM), and the City Council provider function
- Core members will form LCO Board
- A requirement of the LCO is to enable a single contract to be held for all community provision



**Pride in  
Pennine**

Quality-Driven  
Responsible  
Compassionate

The Pennine Acute Hospitals **NHS**  
NHS Trust

# Oldham






# Accountable Care Management Organisation

- ACMO is one of four priorities in Oldham Locality Plan
- Multispecialty provider for out of hospital care
- Design ACMO during 2016/17 with involvement from range of providers
- Initial workshop held to scope ACMO



## Next Steps

- Completion/progression of individual work streams
    - Healthier Together, Clinical Services Transformation, City of Manchester Single Hospital Service, Local Care organisation, Accountable Care Management Organisation
  - Completion of North East Sector Transformation Oversight Review
  - Decision making process
  - Consultation expected in late 2016
  - Progress to implementation
- 

**Pride in  
Pennine**

Quality-Driven  
Responsible  
Compassionate

The Pennine Acute Hospitals **NHS**  
NHS Trust

# Questions and Discussion

