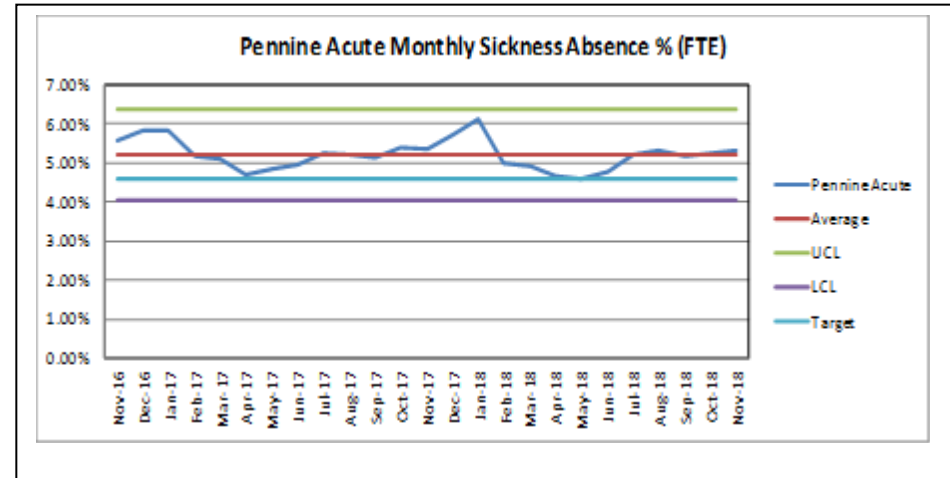
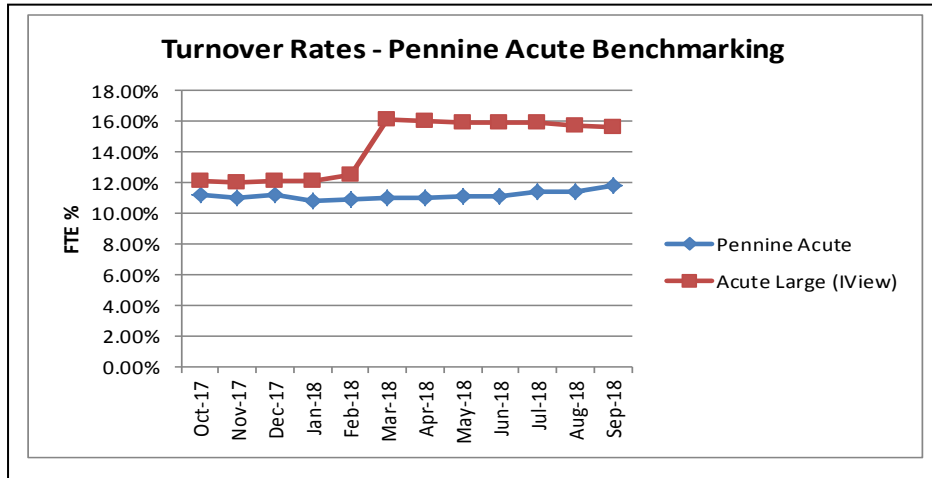


Trust Wide – Month 8 (November 2018)
Sickness and Turnover

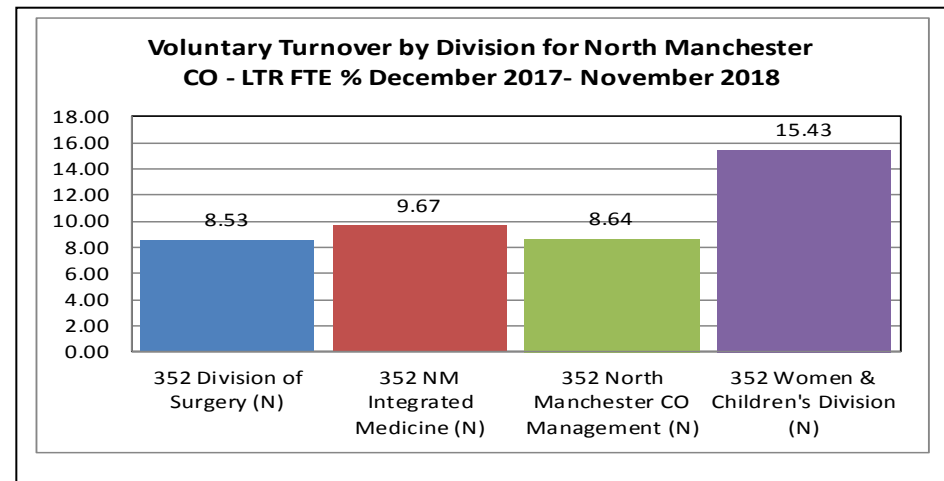
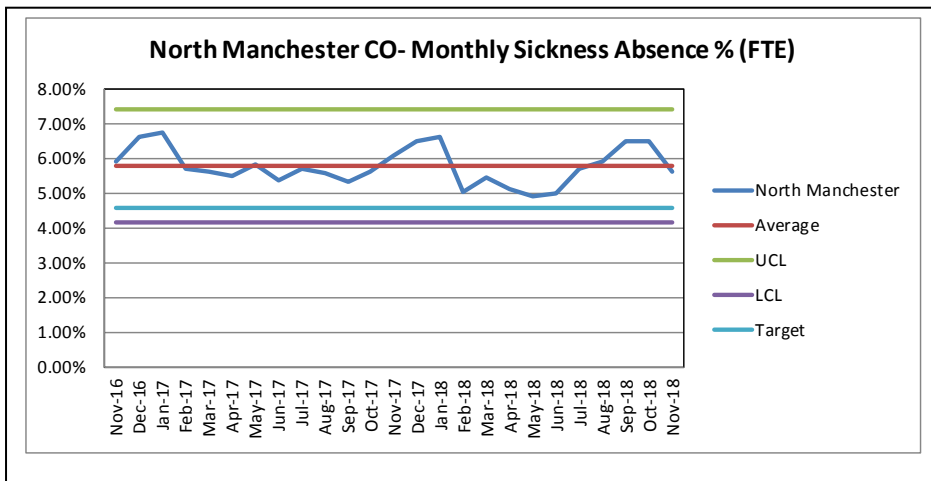
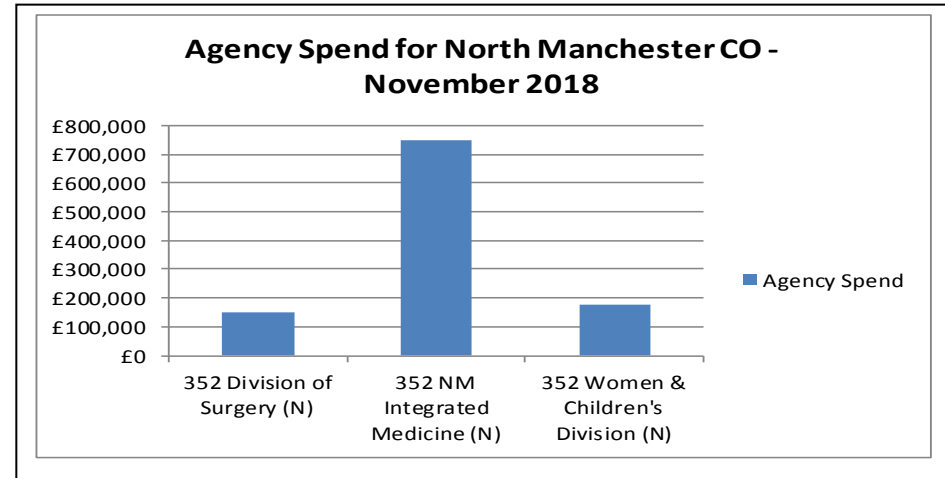
Salford | Oldham | Bury | Rochdale | North Manchester



North Manchester Care Organisation – Month 8 (November 2018)
Staff In Post, Agency, Sickness and Turnover

Salford | Oldham | Bury | Rochdale | North Manchester

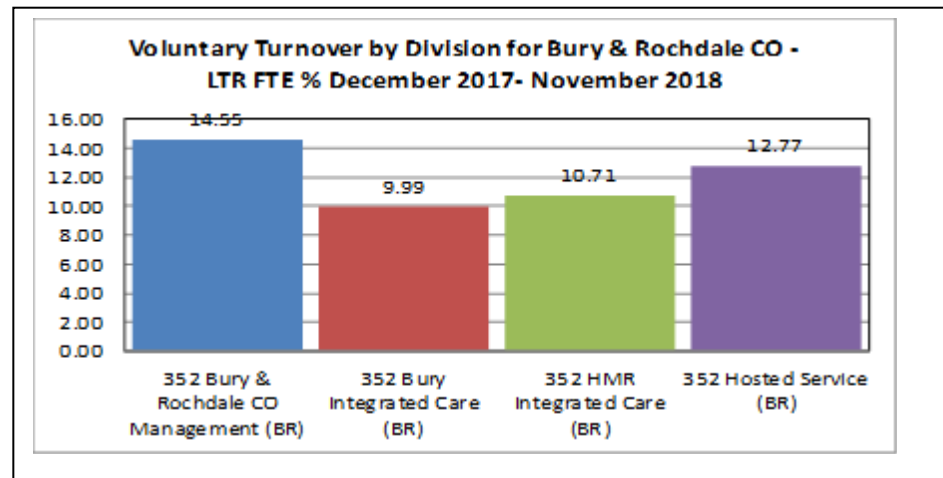
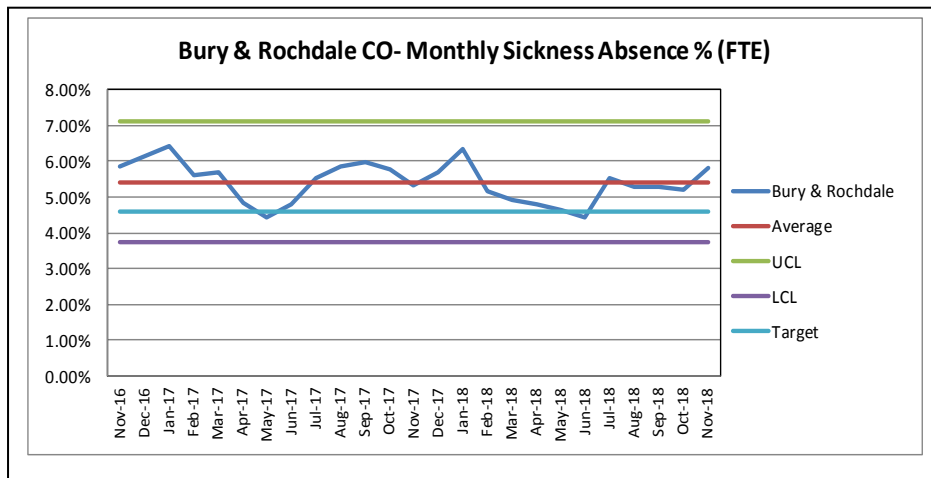
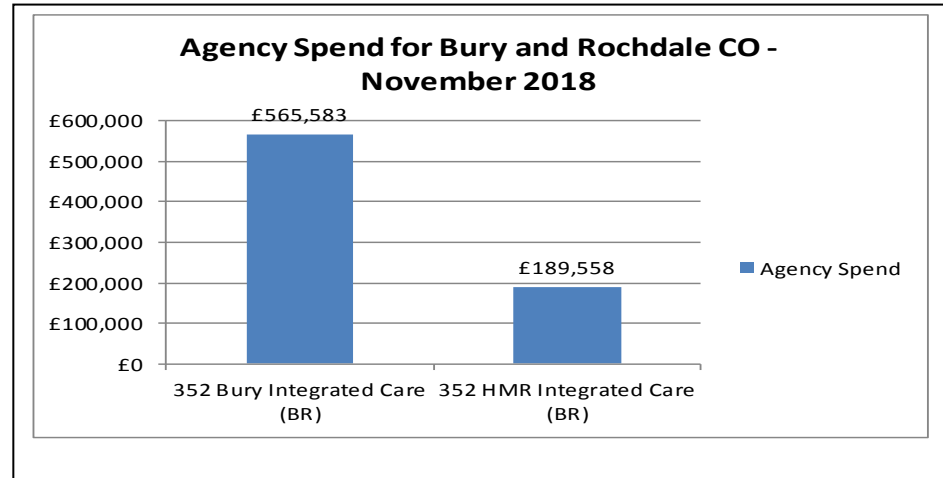
Staff Group	Position FTE	Actual FTE	Variance	% Vacant
Add Prof Scientific and Technic	33.33	35.68	-2.35	-7.05%
Additional Clinical Services	476.35	446.07	30.28	6.36%
Administrative and Clerical	152.06	148.42	3.64	2.39%
Allied Health Professionals	27.03	24.63	2.40	8.89%
Estates and Ancillary	17.40	17.85	-0.45	-2.61%
Healthcare Scientists	28.56	23.92	4.64	16.25%
Medical and Dental	261.64	191.64	70.00	26.75%
Nursing and Midwifery Registered	947.98	834.37	113.61	11.98%
Students	1.00	1.00	0.00	0.00%
352 North Manchester CO	1945.35	1723.59	221.76	11.40%
Pennine Acute	9745.49	8971.41	774.08	7.94%



Bury and Rochdale Care Organisation – Month 8 (November 2018)
Staff In Post, Agency, Sickness and Turnover

Alford | Oldham | Bury | Rochdale | North Manchester

Staff Group	Position FTE	Actual FTE	Variance	% Vacant
Add Prof Scientific and Technic	24.10	27.13	-3.03	-12.56%
Additional Clinical Services	514.50	520.35	-5.85	-1.14%
Administrative and Clerical	199.14	190.95	8.19	4.11%
Allied Health Professionals	219.65	214.40	5.25	2.39%
Estates and Ancillary	6.60	6.12	0.48	7.28%
Healthcare Scientists	20.97	20.84	0.13	0.64%
Medical and Dental	239.17	196.33	42.84	17.91%
Nursing and Midwifery Registered	823.45	737.63	85.82	10.42%
Students	1.00	1.00	0.00	0.00%
352 Bury & Rochdale CO	2048.58	1914.75	133.83	6.53%
Pennine Acute	9745.49	8971.41	774.08	7.94%



Royal Oldham Care Organisation – Month 8 (November 2018)
Staff In Post, Agency, Sickness and Turnover

Salford | Oldham | Bury | Rochdale | North Manchester

Staff Group	Position FTE	Actual FTE	Variance	% Vacant
Add Prof Scientific and Technic	28.58	35.28	-6.70	-23.44%
Additional Clinical Services	502.38	485.36	17.02	3.39%
Administrative and Clerical	183.46	165.18	18.28	9.96%
Allied Health Professionals	97.40	99.95	-2.55	-2.62%
Estates and Ancillary	13.35	7.80	5.55	41.57%
Healthcare Scientists	1.00	2.00	-1.00	-100.00%
Medical and Dental	304.14	279.28	24.87	8.18%
Nursing and Midwifery Registered	1118.27	1030.10	88.17	7.88%
Students	6.00	7.00	-1.00	-16.67%
352 Royal Oldham CO	2254.58	2111.94	142.64	6.33%
Pennine Acute	9745.49	8971.41	774.08	7.94%

