

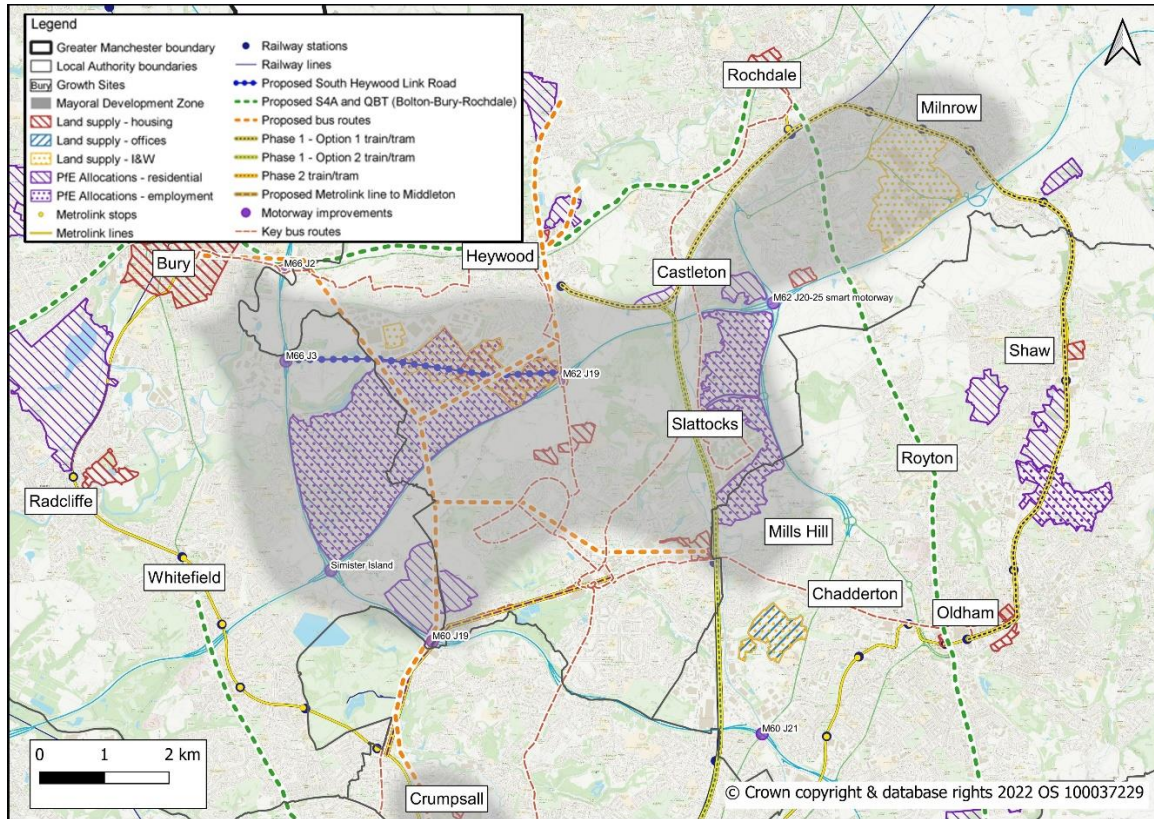
APPENDIX 1: BENEFITS OF THE ATOM VALLEY MDZ

It will:

- Assist in strategically focussing development activity across the area;
- Deliver the single institutional mechanism for land assembly, master planning, development facilitation, site preparation, infrastructure and place creation;
- Have the ability to harness the resources of local and national government to secure maximum impacts and efficiency;
- Align public sector investment to assist in unlocking the area's potential;
- Have the recognised profile and ability to create a diverse mix of investment propositions to take to the market and to Government;
- Have the recognised profile to procure development partners where this is required, underpinned by land sale agreements or joint ventures between public and private sector partners;
- Be able to bring together appropriate experience and capacity in development and place-making from across the public sector and at a Board level to create the momentum required to support delivery of a long-term and complex change programme of initiatives, programmes and interventions;
- Set in place a time-limited but long-term structure by way of the business plan that would sit outside of other organisational contexts and pressures. This would ensure that there was a committed resource in place to be at the centre of the investment strategy; and;
- Enable a focussed and integrated approach for all key development activities that will optimise the relationships between democratic responsibility and the economic and social priorities of the GM Mayor, GMCA, the three local authorities and other public partners, as well private partners to ensure relevant reporting and that proceedings can be correctly scrutinised and rigorously tested through existing democratic structures and governance.

APPENDIX 2: PLAN

Proposed Mayoral Development Zone



APPENDIX 3: ATOM VALLEY MDZ OBJECTIVES

The high-level objectives of the Atom Valley MDZ will consist of:

- Delivering approximately 1,700,000 square metres of new employment floorspace, 21,500 quality jobs and 4,430 of new quality low carbon homes linked to sustainable transport;
- Contributing to the delivery of the transport strategy for the area that connects the three growth sites to existing communities and develops new communities that are accessed by a choice of transport modes. This will include the timely support of national transport agencies to align investment in highways and transport at a pace and scale to align with development coming forward;
- Contributing to the delivery of the social infrastructure and amenity required to support an increase in the business and residential population of the area and to benefit existing residents of the area;
- Attracting public and private sector investment to support the delivery of employment and residential growth;
- Working with partners including higher educational institutions to ensure that the local labour force has the skills to meet the needs of new and growing businesses, residential and employment growth;
- Ensuring that the development of inclusive and sustainable growth of the three sites within the Atom Valley MDZ are contributing towards the regeneration objectives of the surrounding town centres; and;
- Working closely with identified partners and including the three local authorities, GMCA, TfGM, National Highways, Great British Railways, Homes England and the private sector joint venture developer.