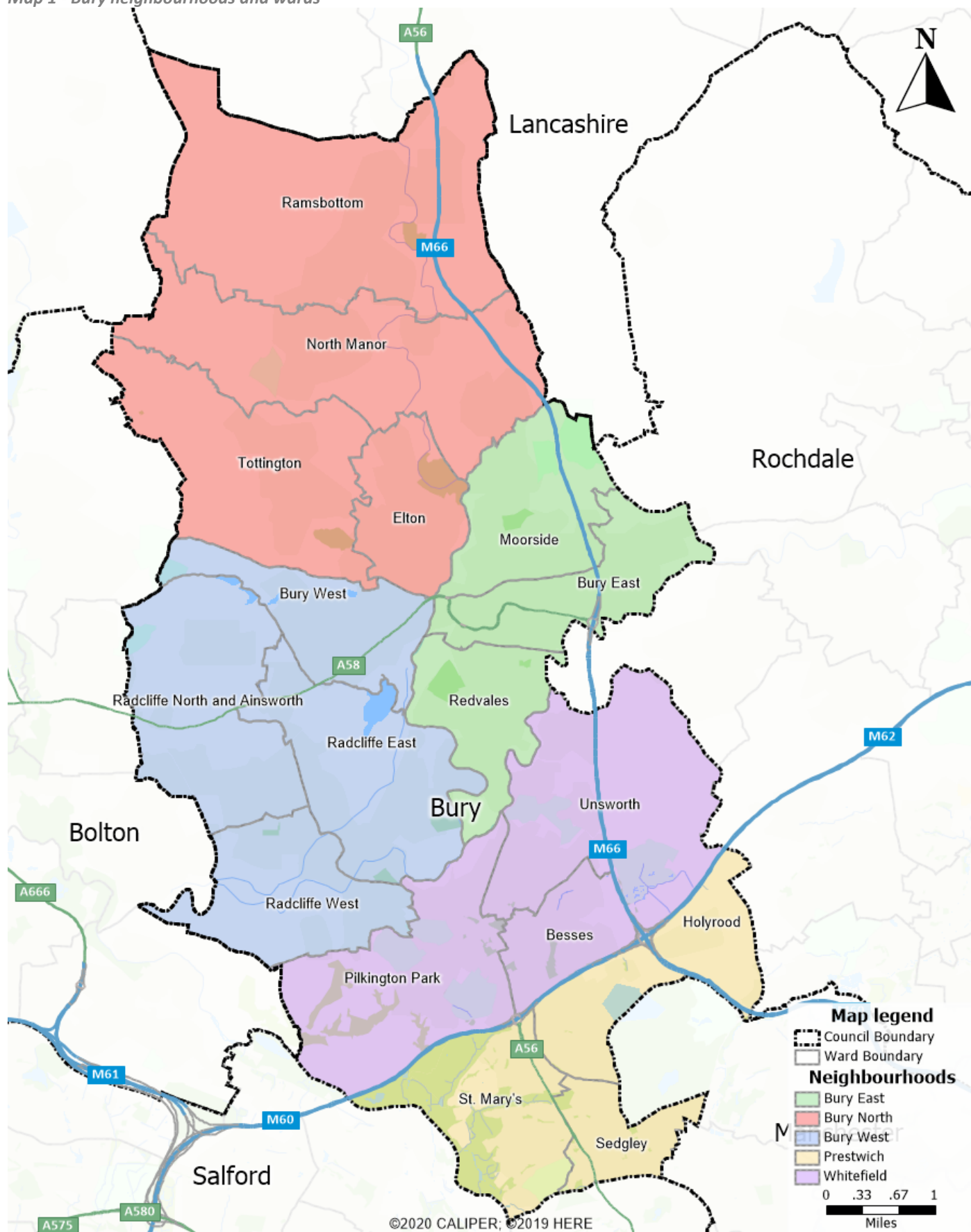
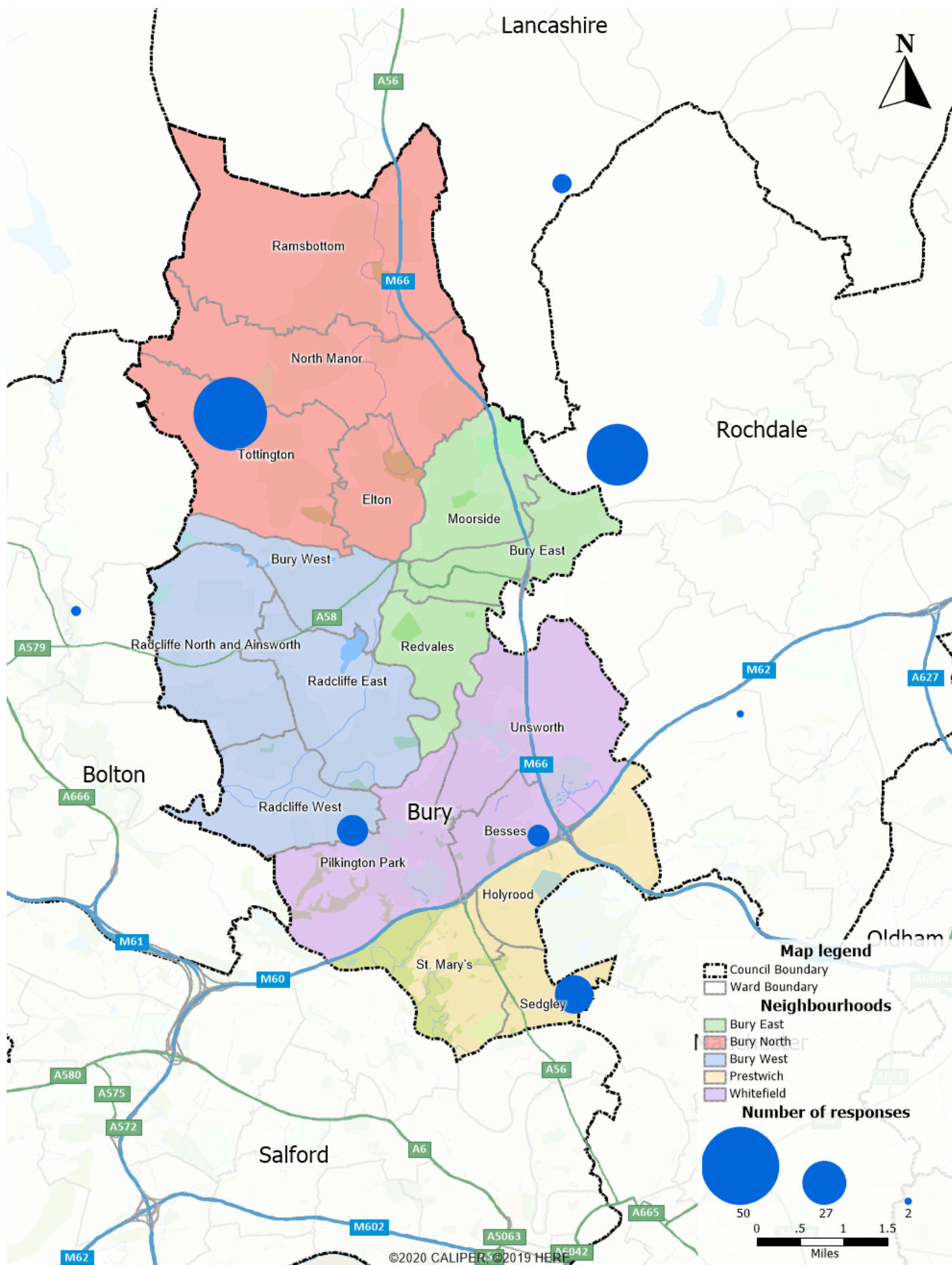


Appendix Ten – Maps

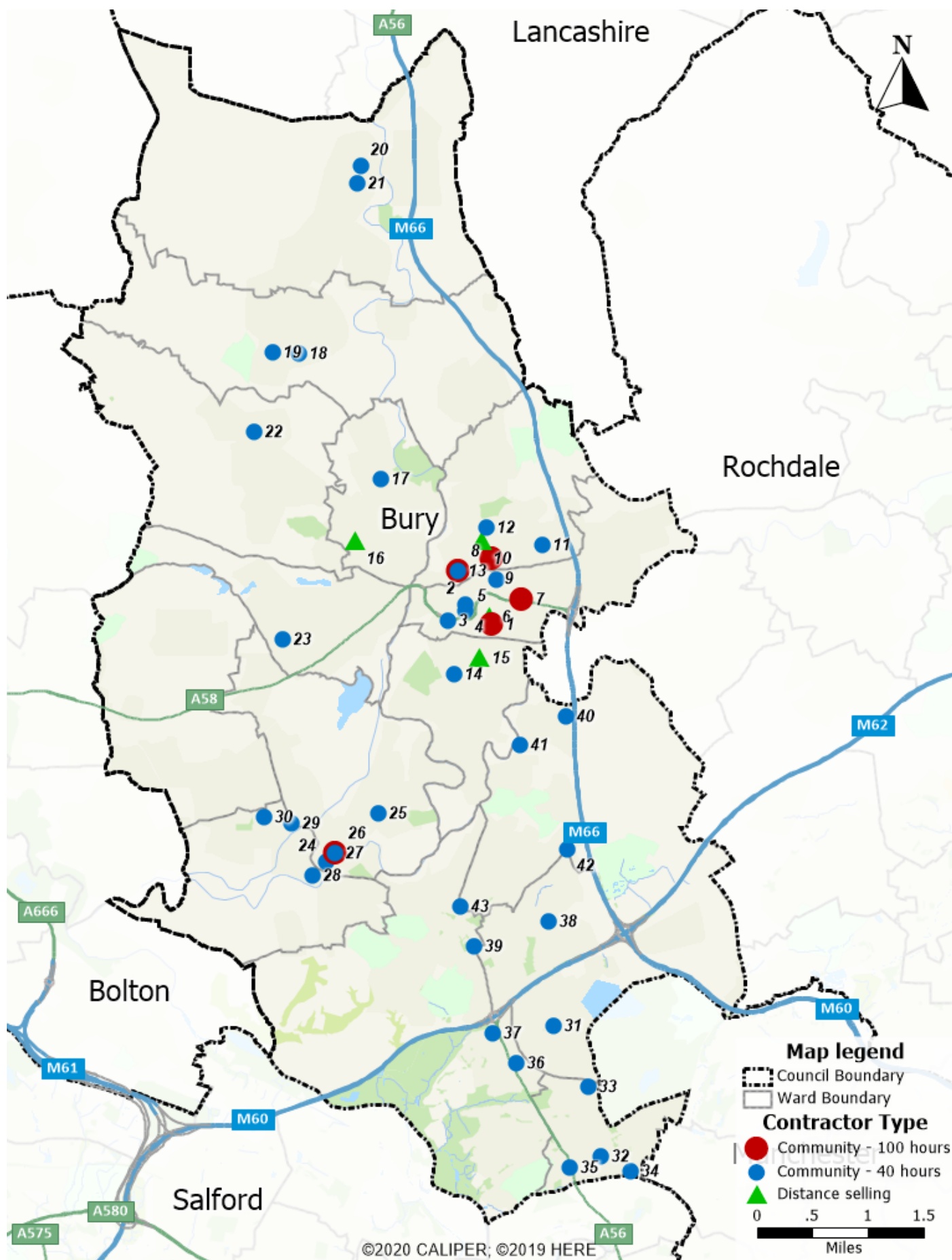
Map 1 - Bury neighbourhoods and wards



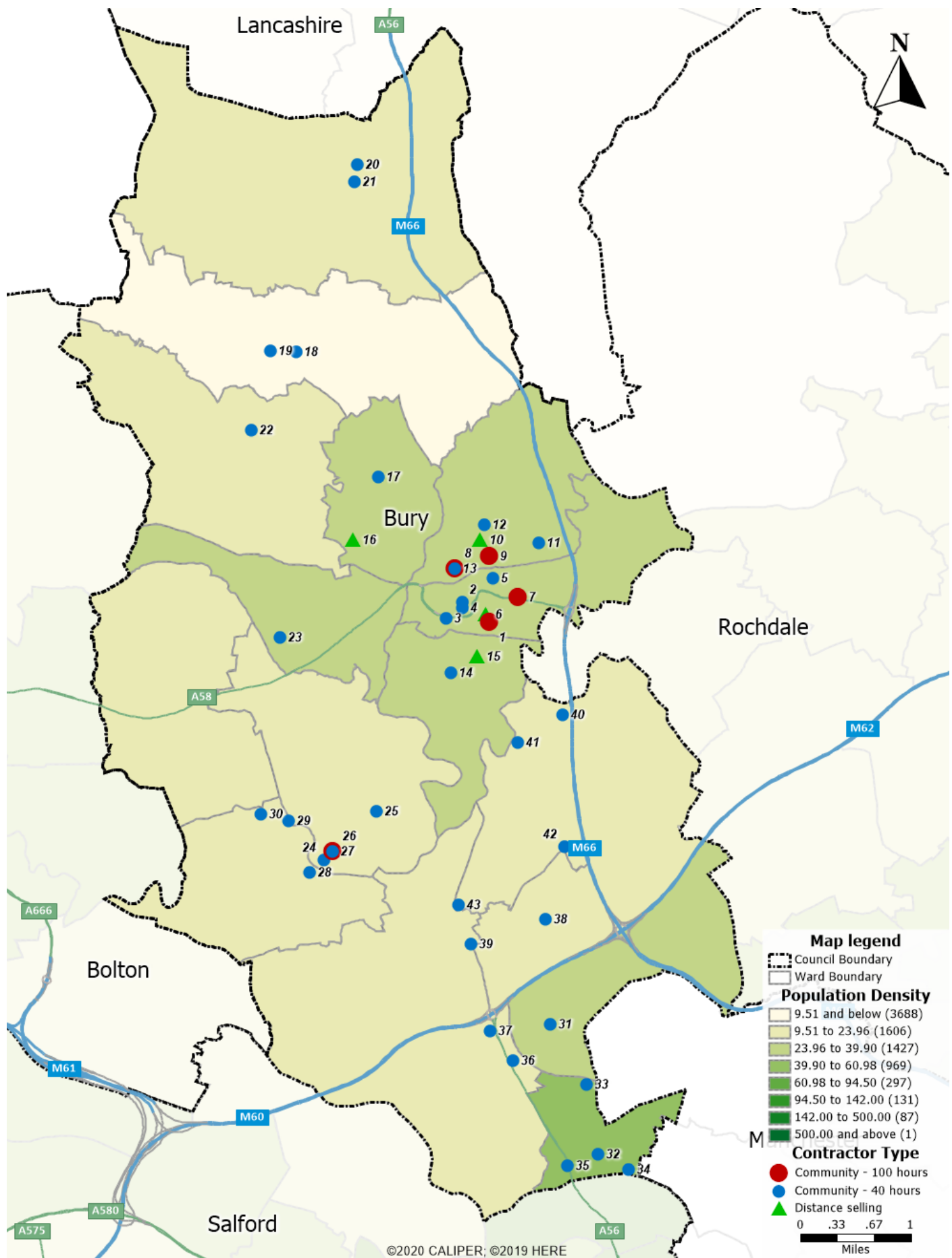
Map 2 - Public survey responses by post code district



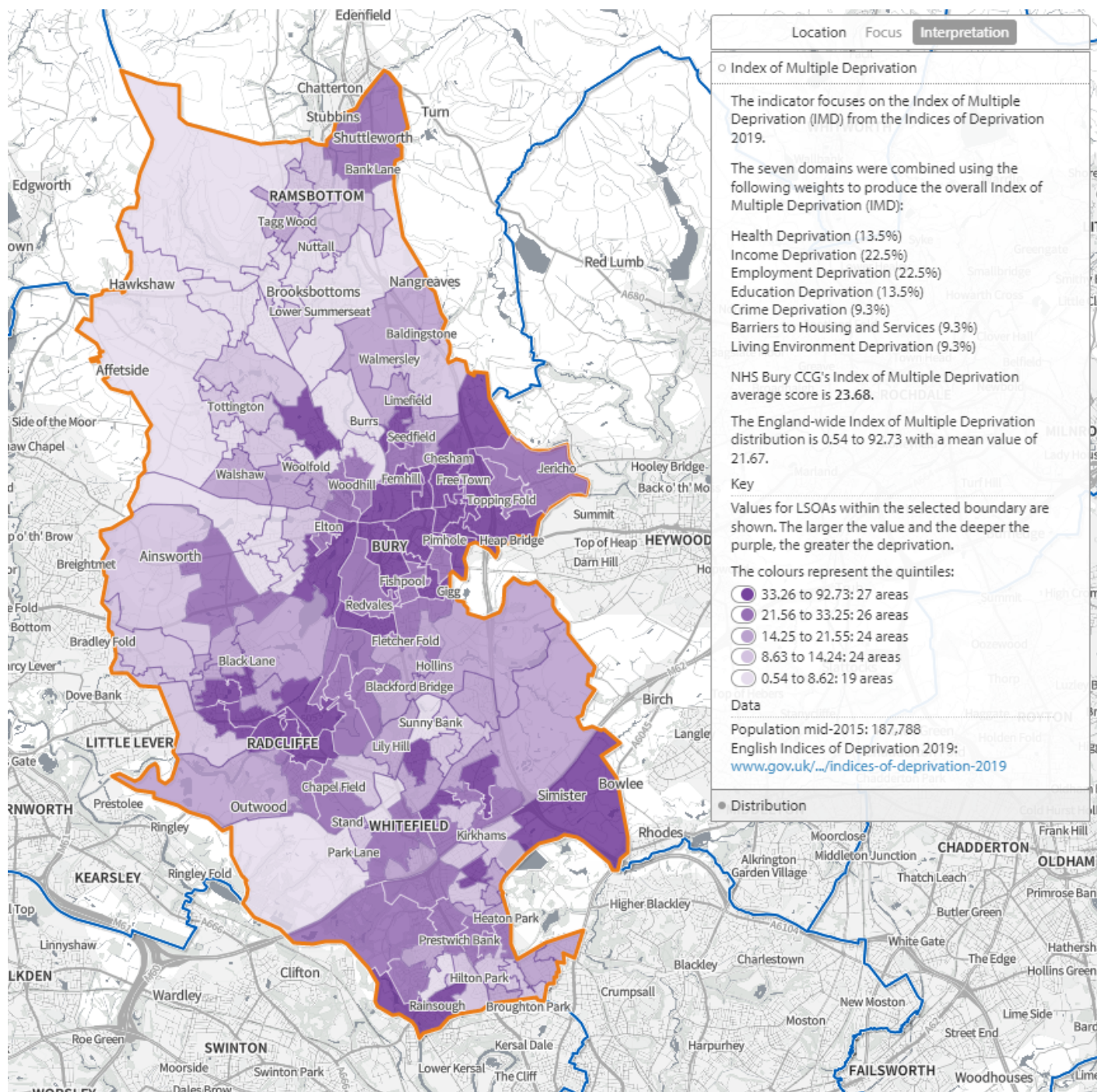
Map 3 - Bury pharmacies by contractor type



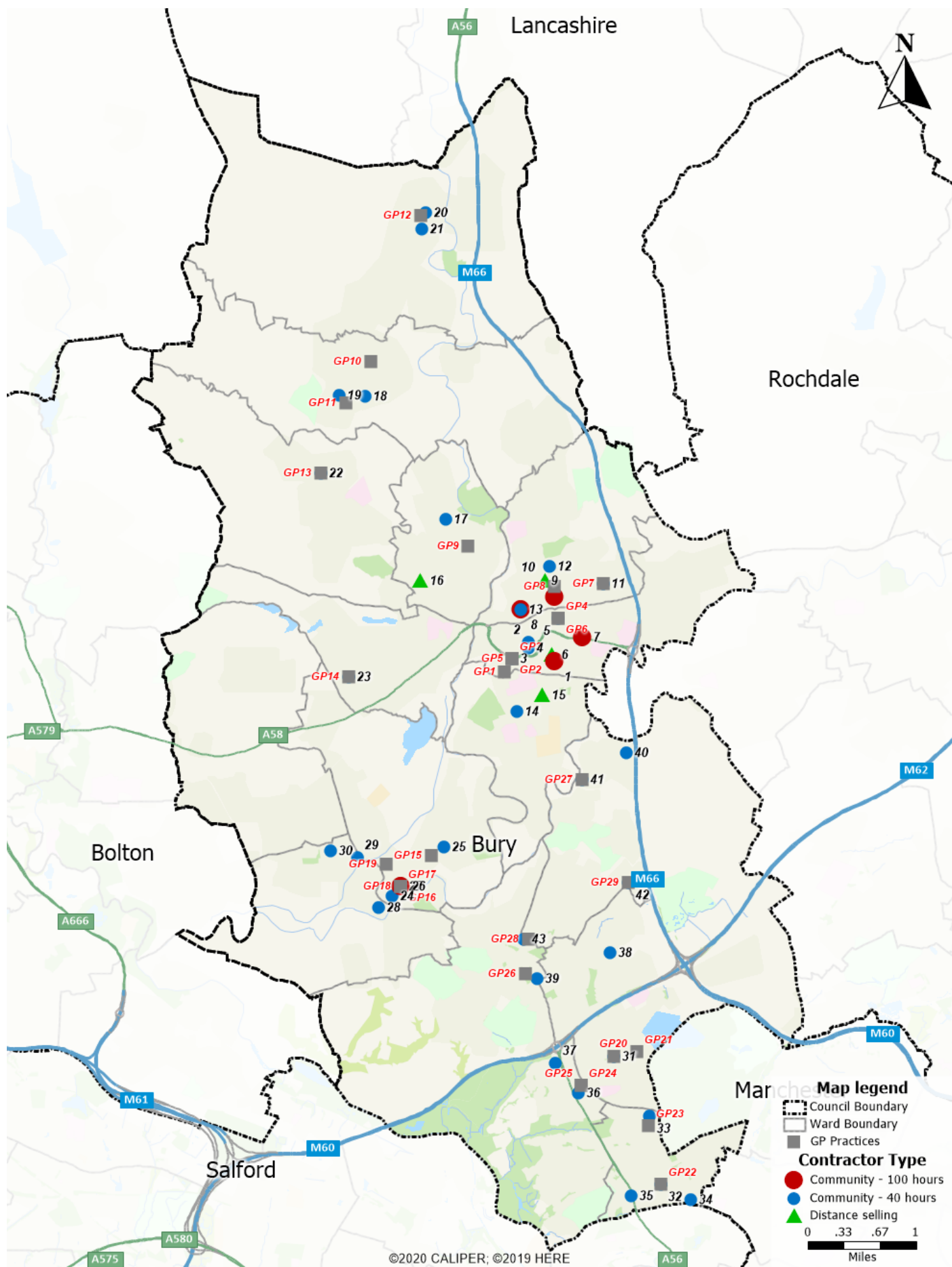
Map 4 - Population density



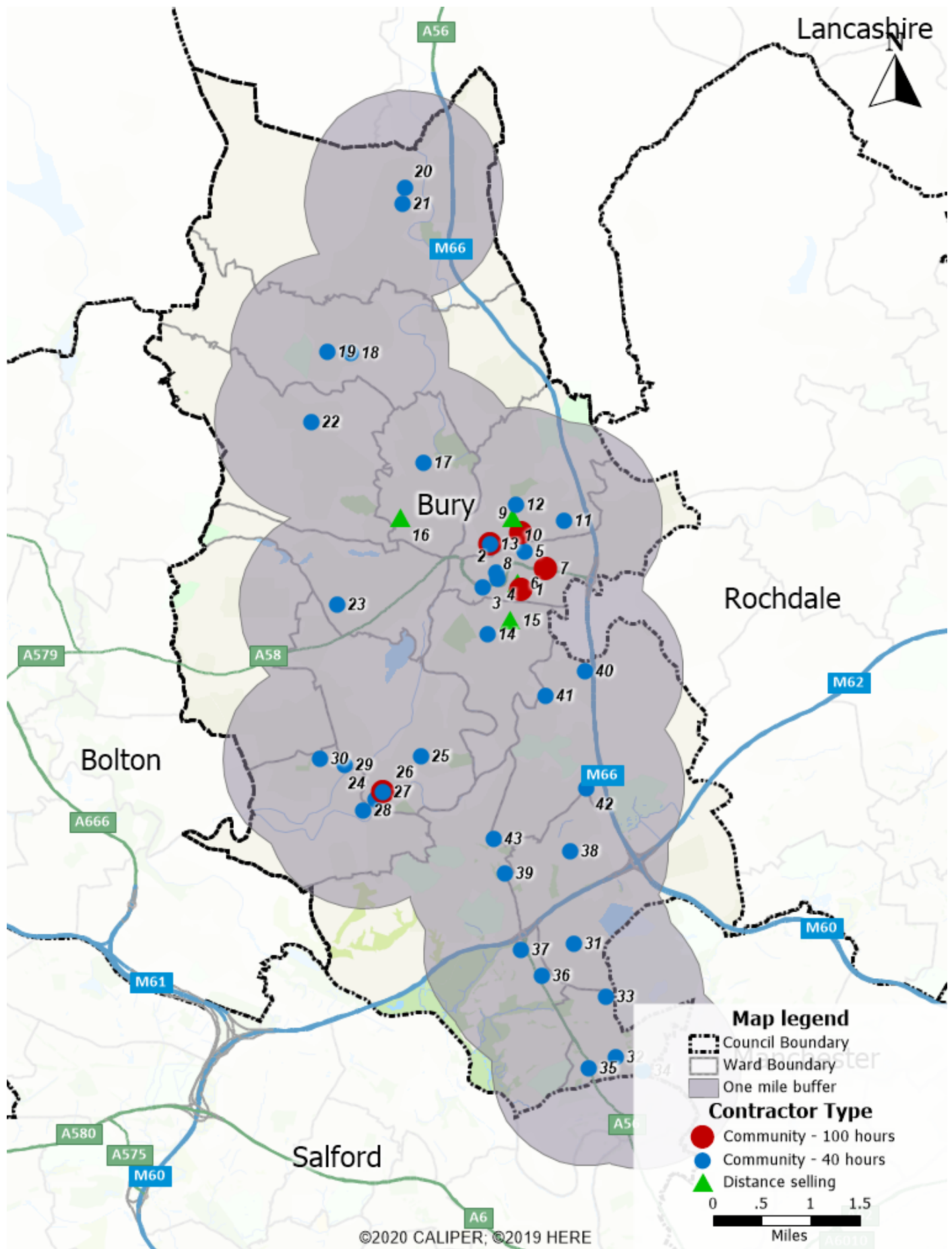
Map 5 - IMD 2019 by LSOA



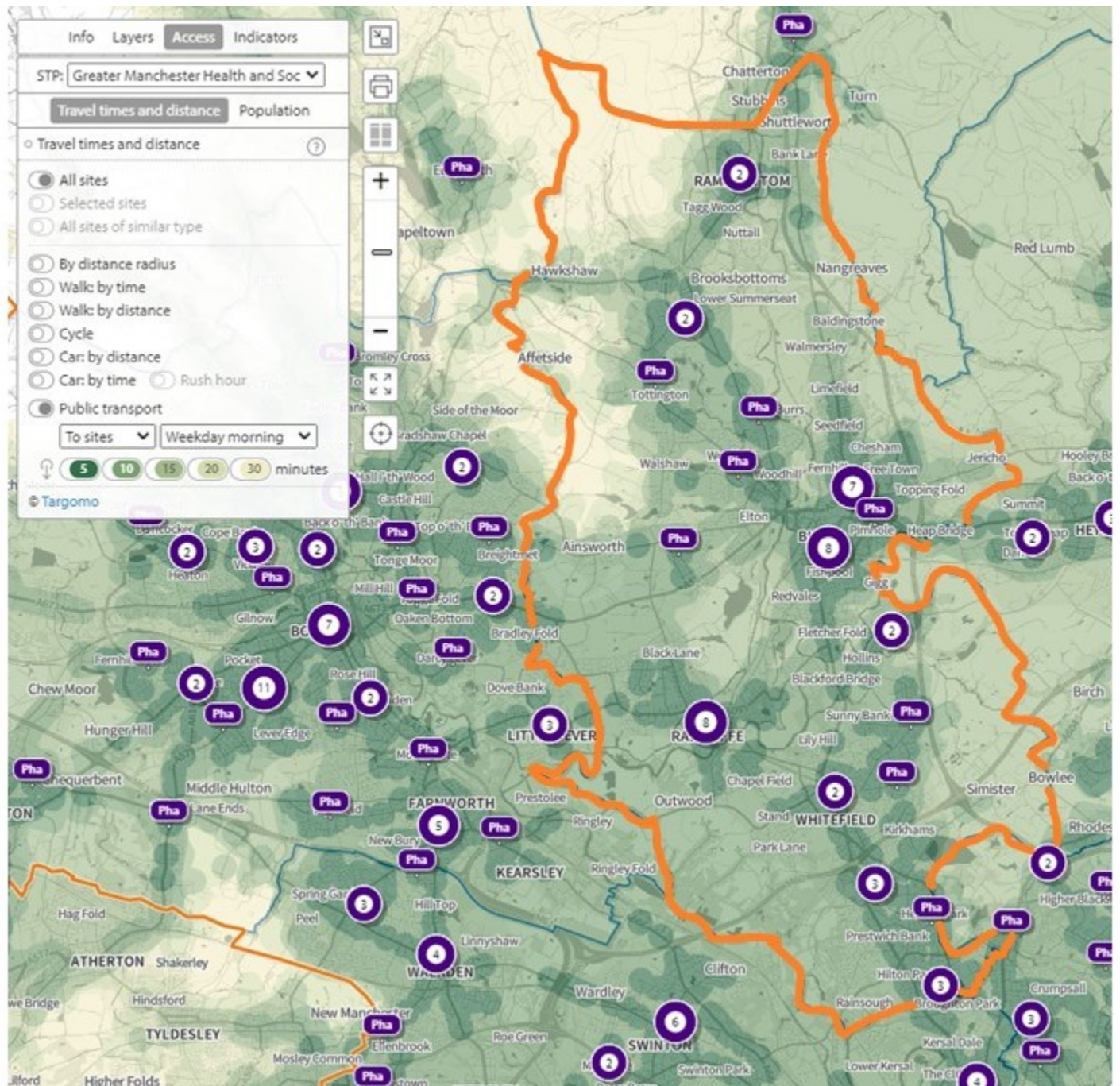
Map 6 - Location of pharmacies and GP practices



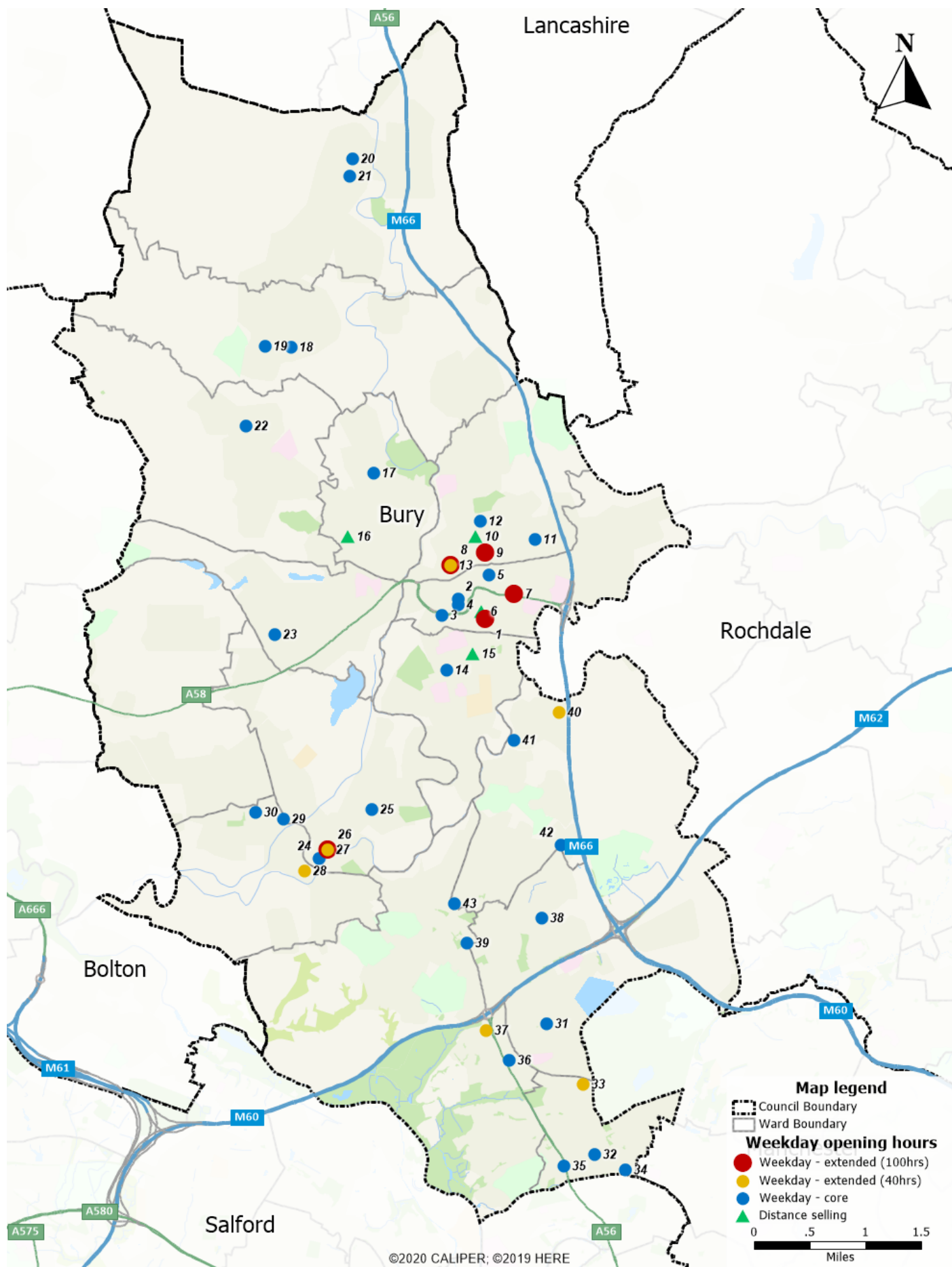
Map 7 - Bury pharmacies showing one mile travel distance



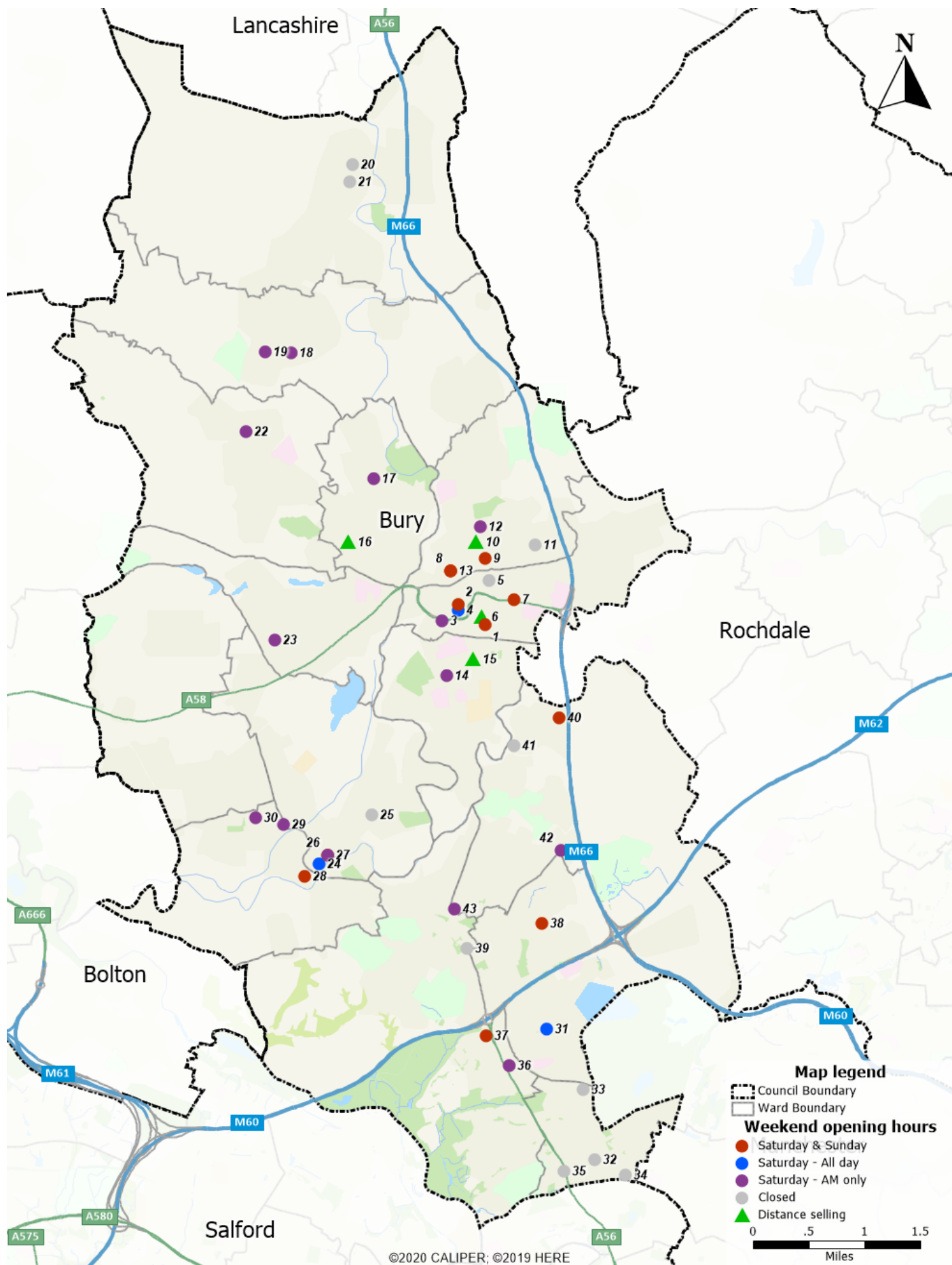
Map 8 - Bury and surrounding Borough Pharmacies showing 20-minute public transport travel time



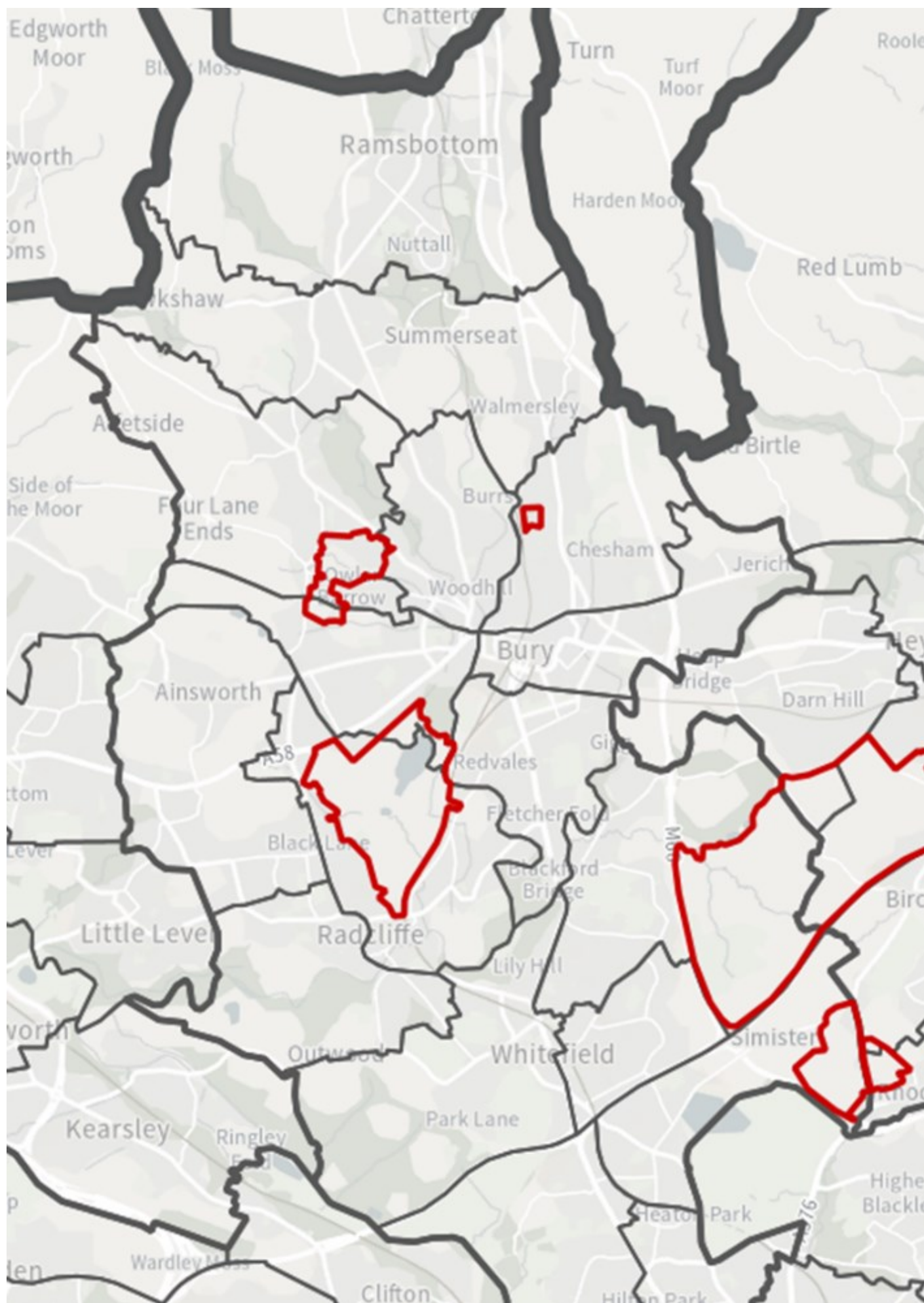
Map 9 - Bury weekday opening hours (showing core and extended hours)



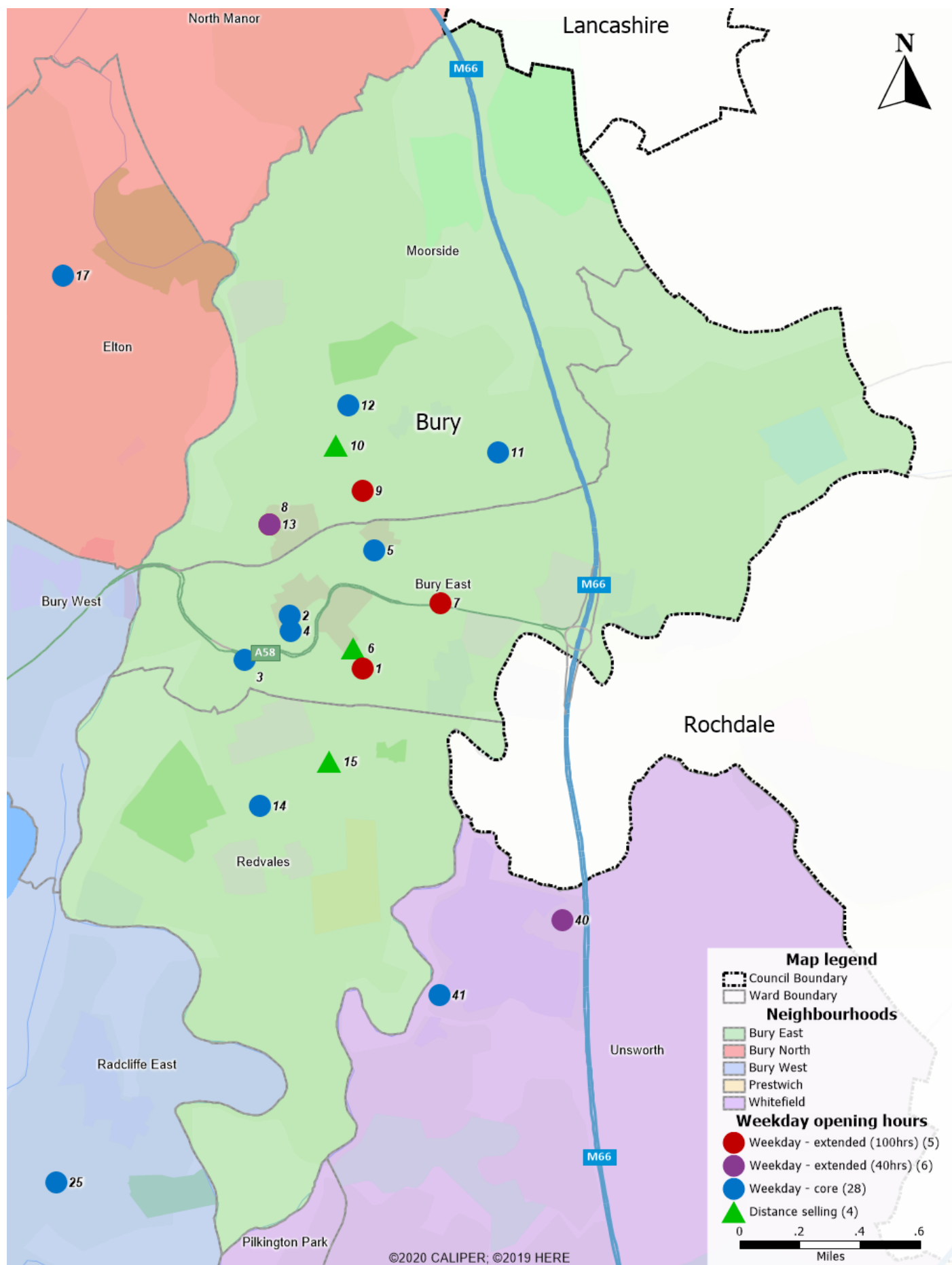
Map 10 - Bury weekend opening hours (showing Saturday am, all day Saturday and both Saturday and Sunday)



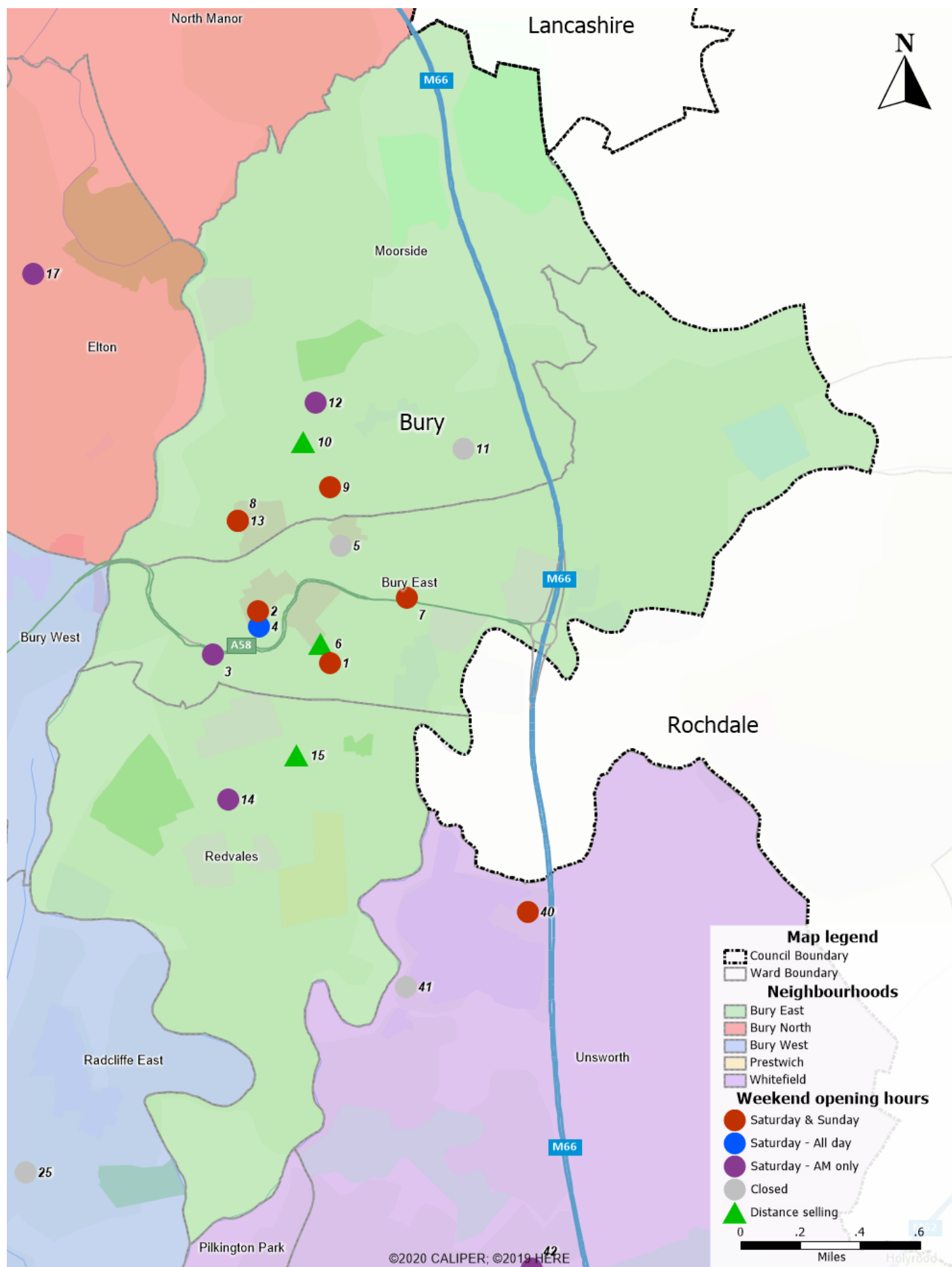
Map 11 - Places for Everyone Proposed Strategic Allocations



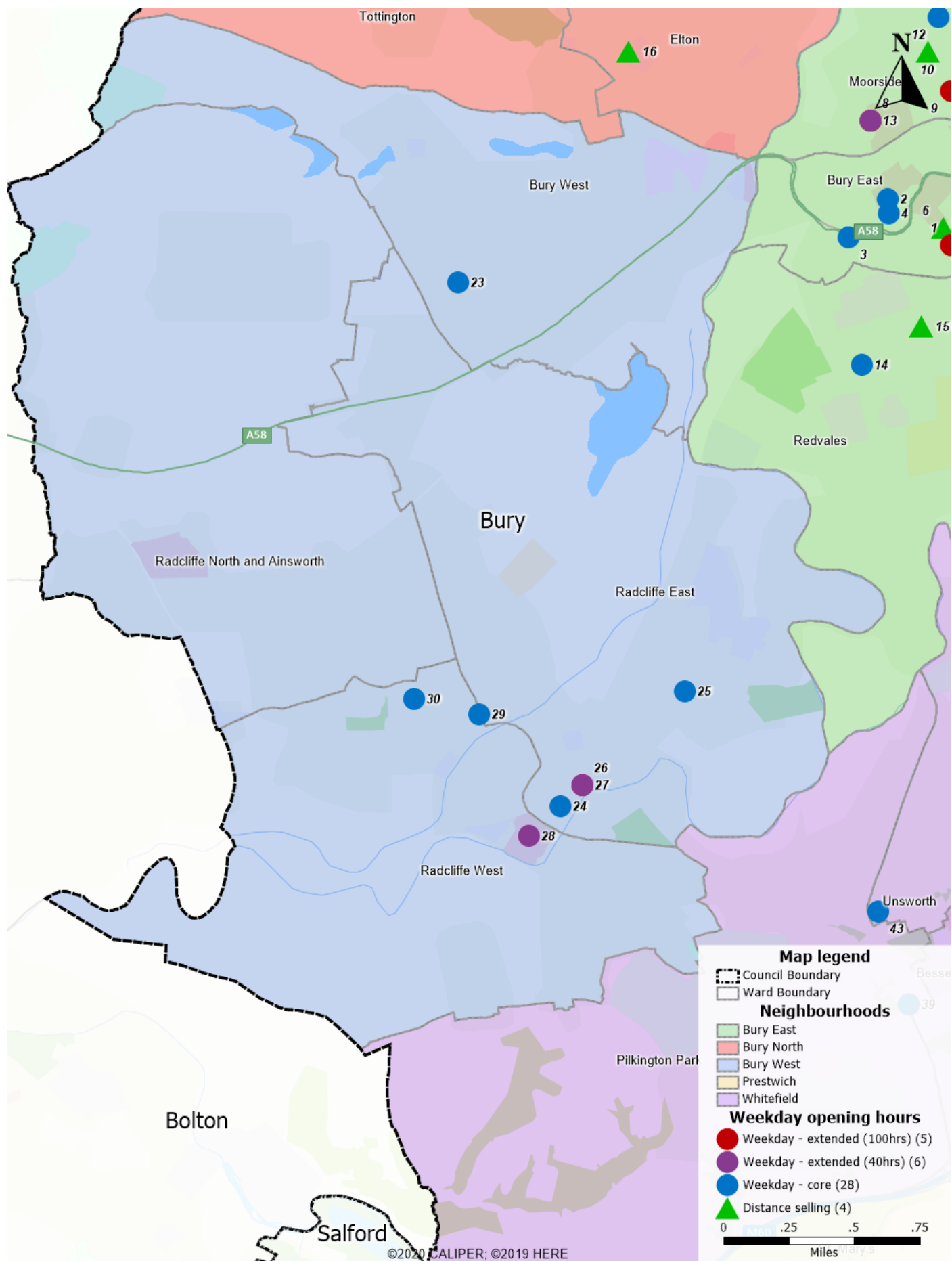
Map 12 - Weekday provision in Bury East



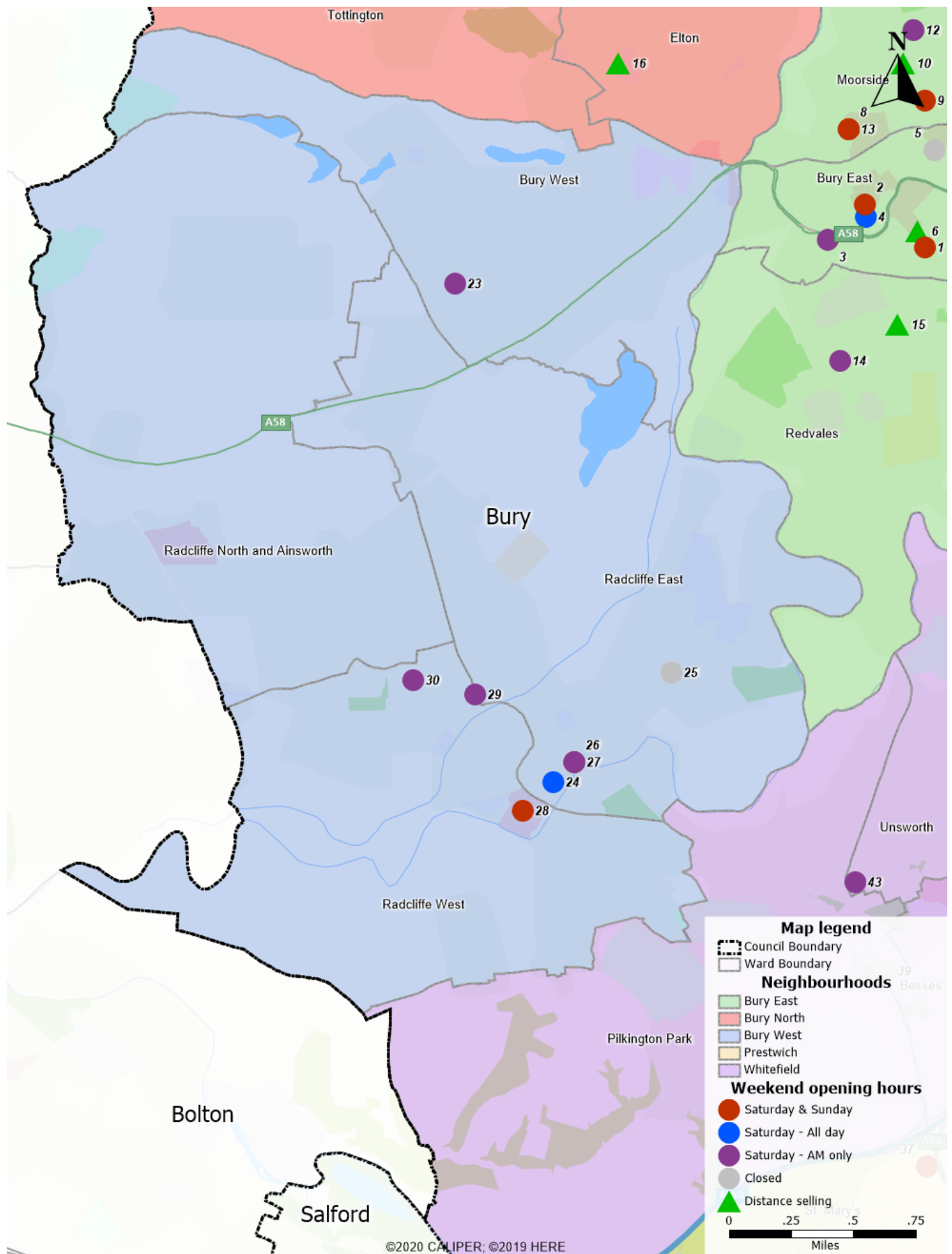
Map 13 - Weekend provision in Bury East



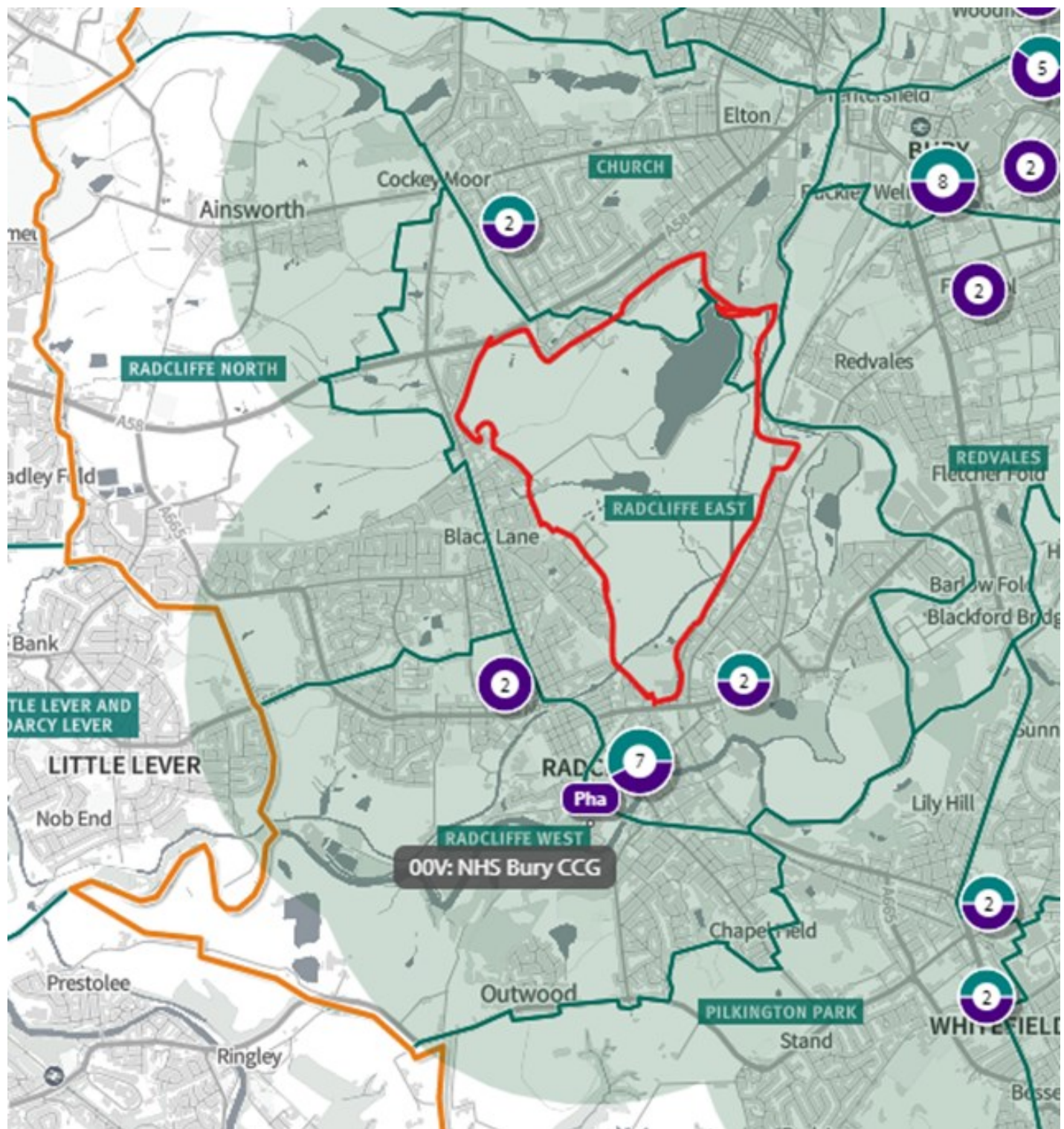
Map 14 - Weekday provision in Bury West



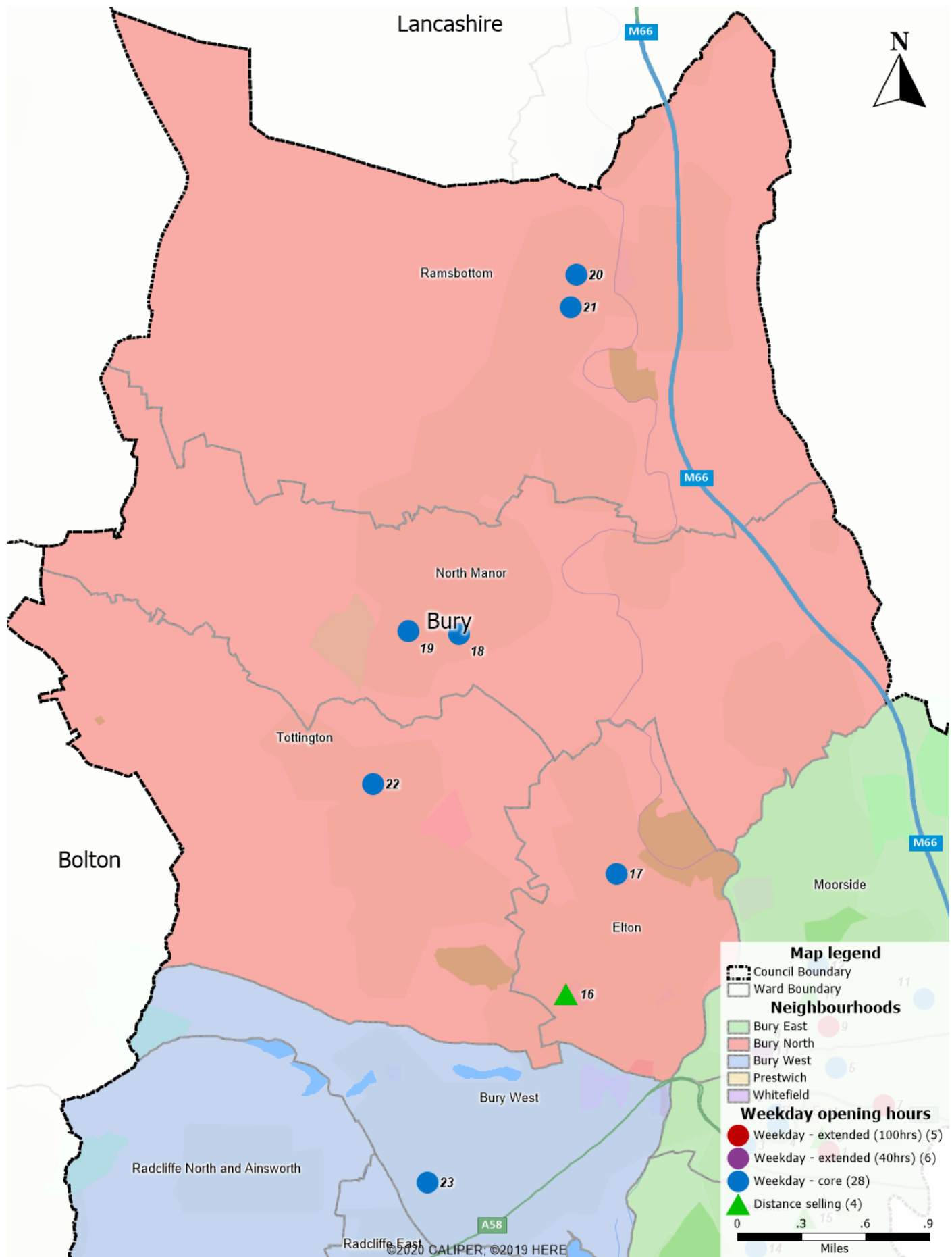
Map 15 - Weekend provision in Bury West



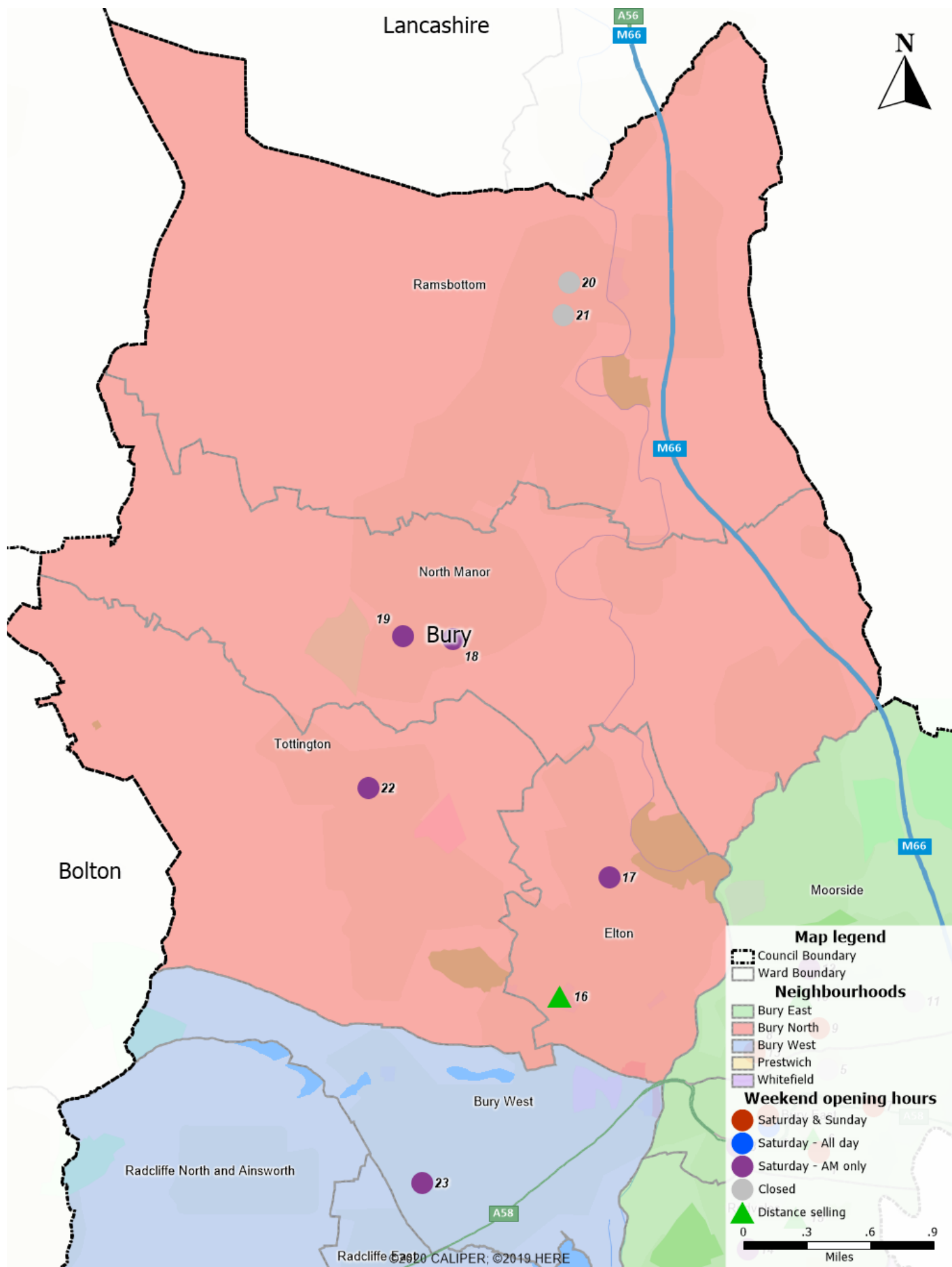
A map of the Bury CCG catchment areas. The map shows several wards outlined in green: RADCLIFFE NORTH, RADCLIFFE EAST, RADCLIFFE WEST, and LITTLE LEVER. Other areas shown include Ainsworth, Cockey Moor, Elton, Redvales, and Whitefield. A red outline highlights a specific area within the Radcliffe East ward. A black box with white text indicates '00V: NHS Bury CCG'. Various locations are labeled, including Black Lane, Chapel Field, Outwood, and Ringley. A purple circle with the number 7 is located near the center, and several purple circles with the number 2 are scattered throughout the map.



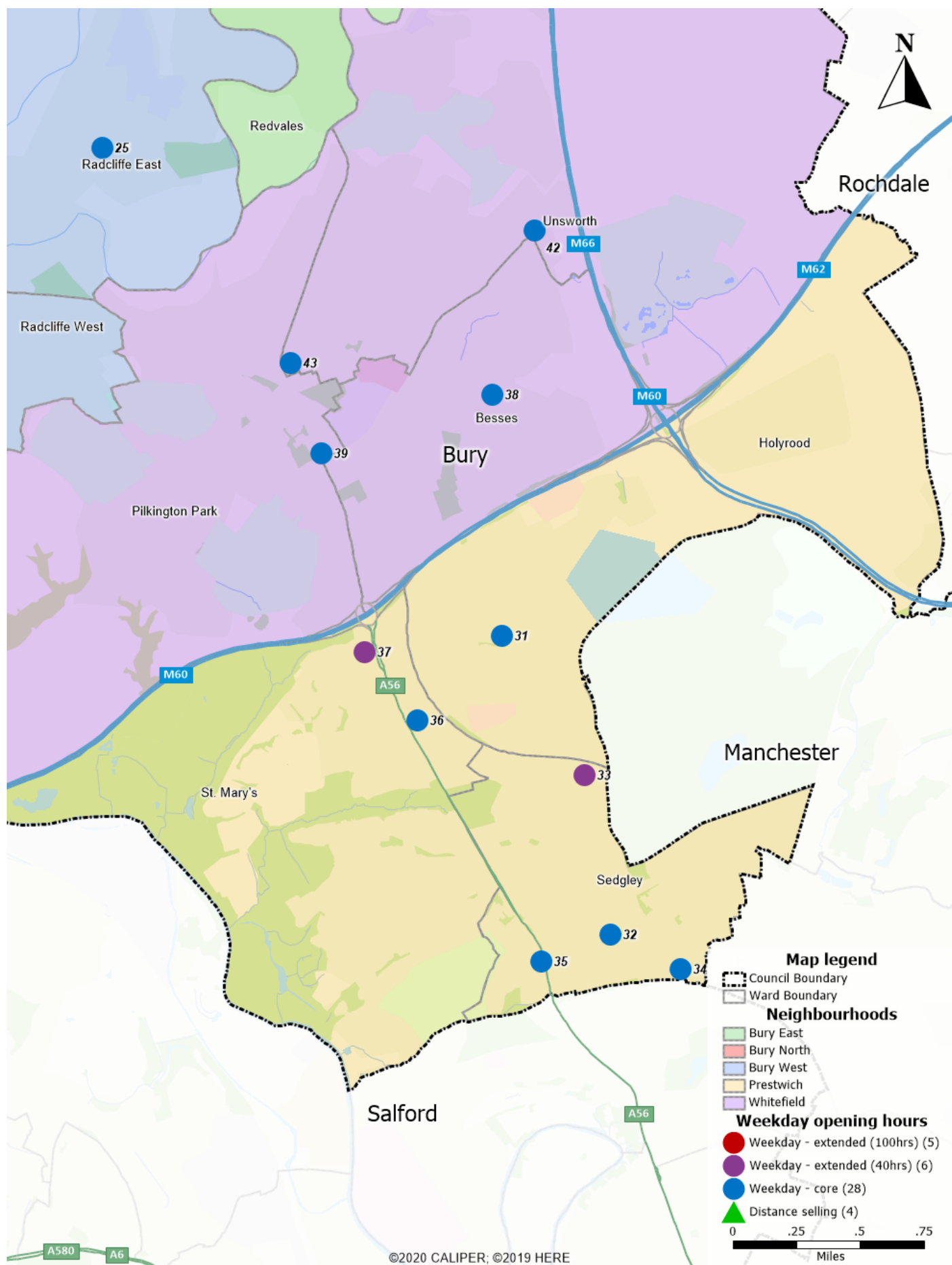
Map 17 - Weekday provision in Bury North



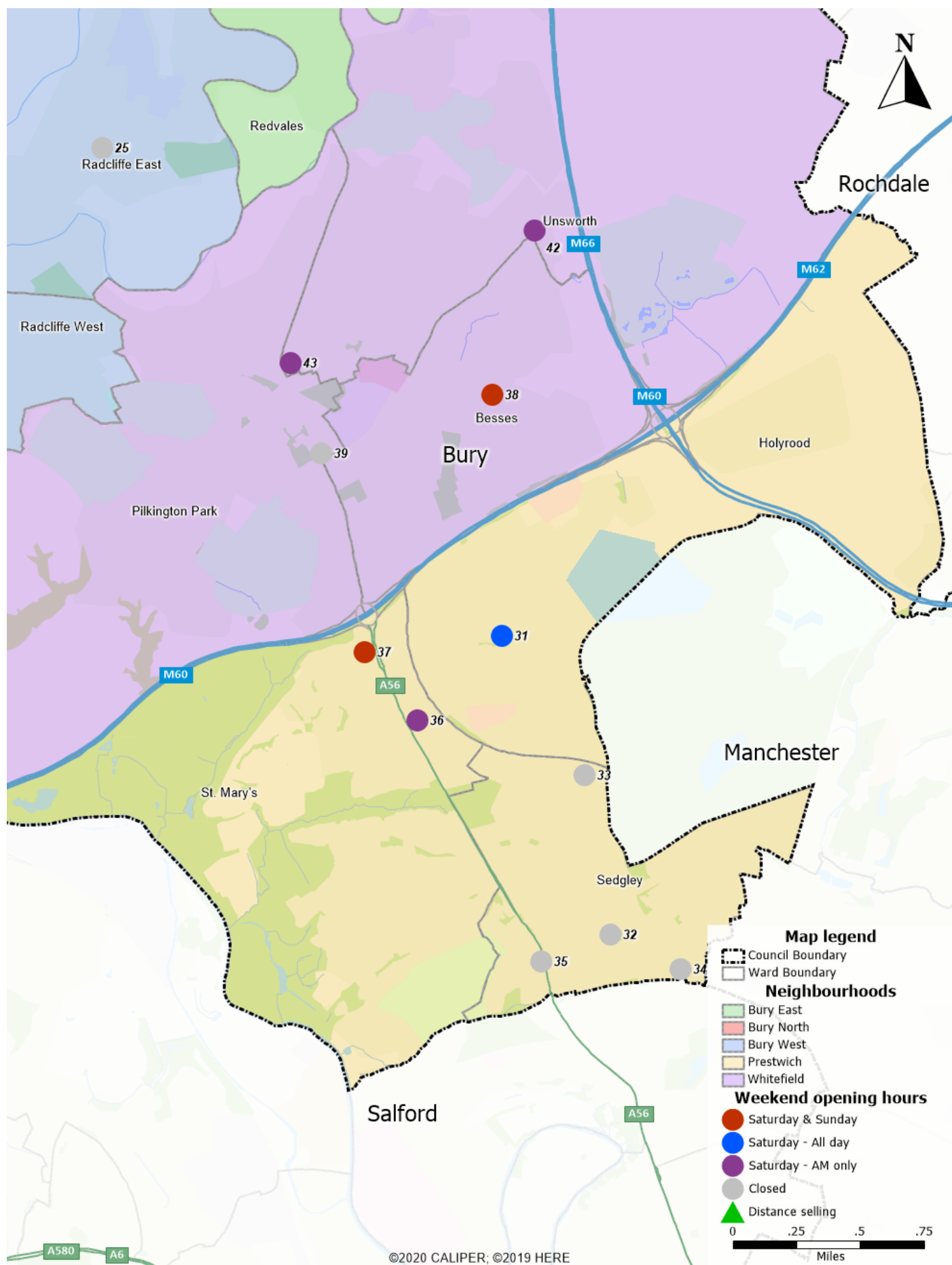
Map 18 - Weekend provision in Bury North



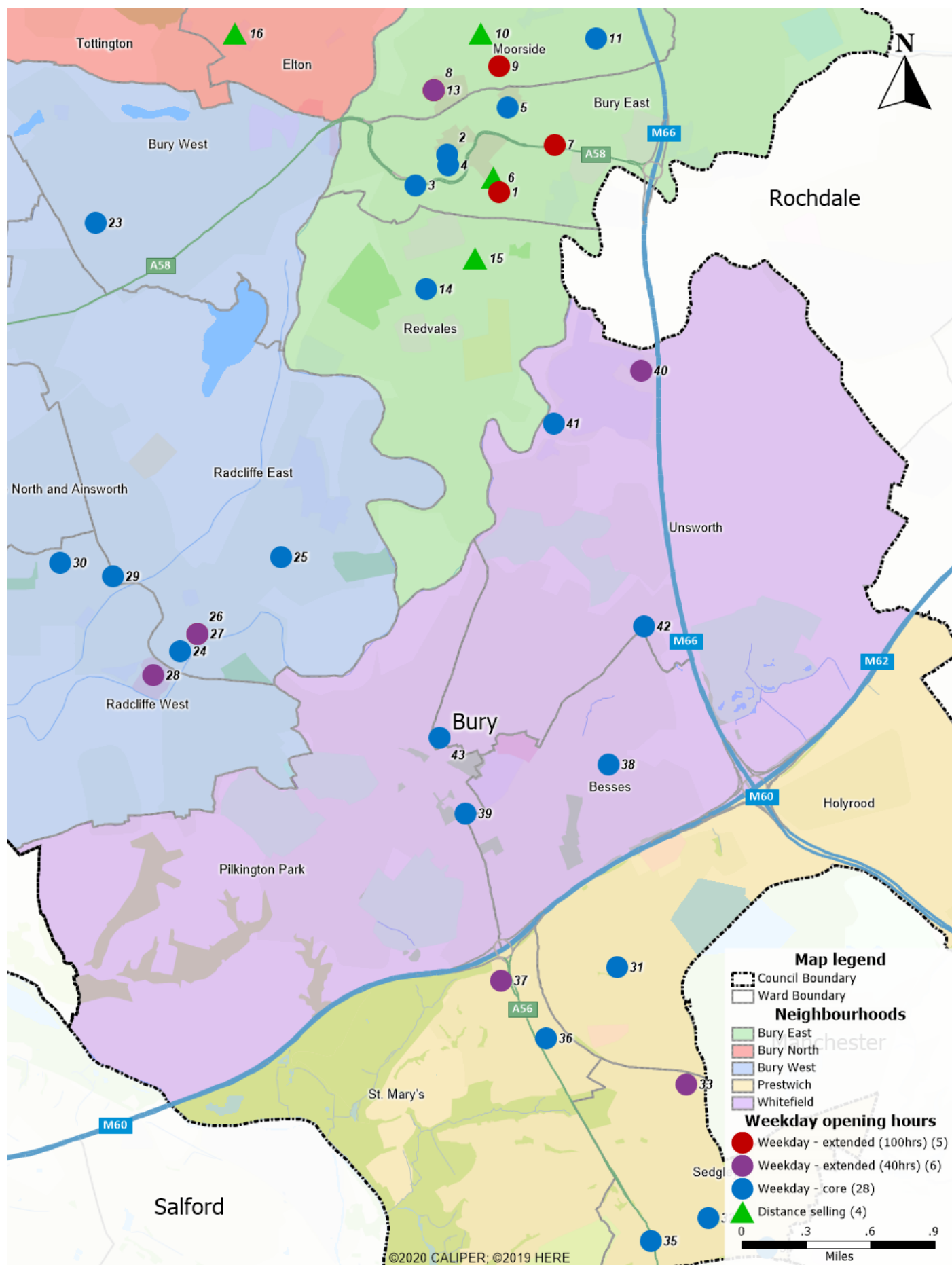
Map 19 - Weekday provision in Prestwich



Map 20 - Weekend provision in Prestwich



Map 21 - Weekday provision in Whitefield



Map 22 - Weekend provision in Whitefield

