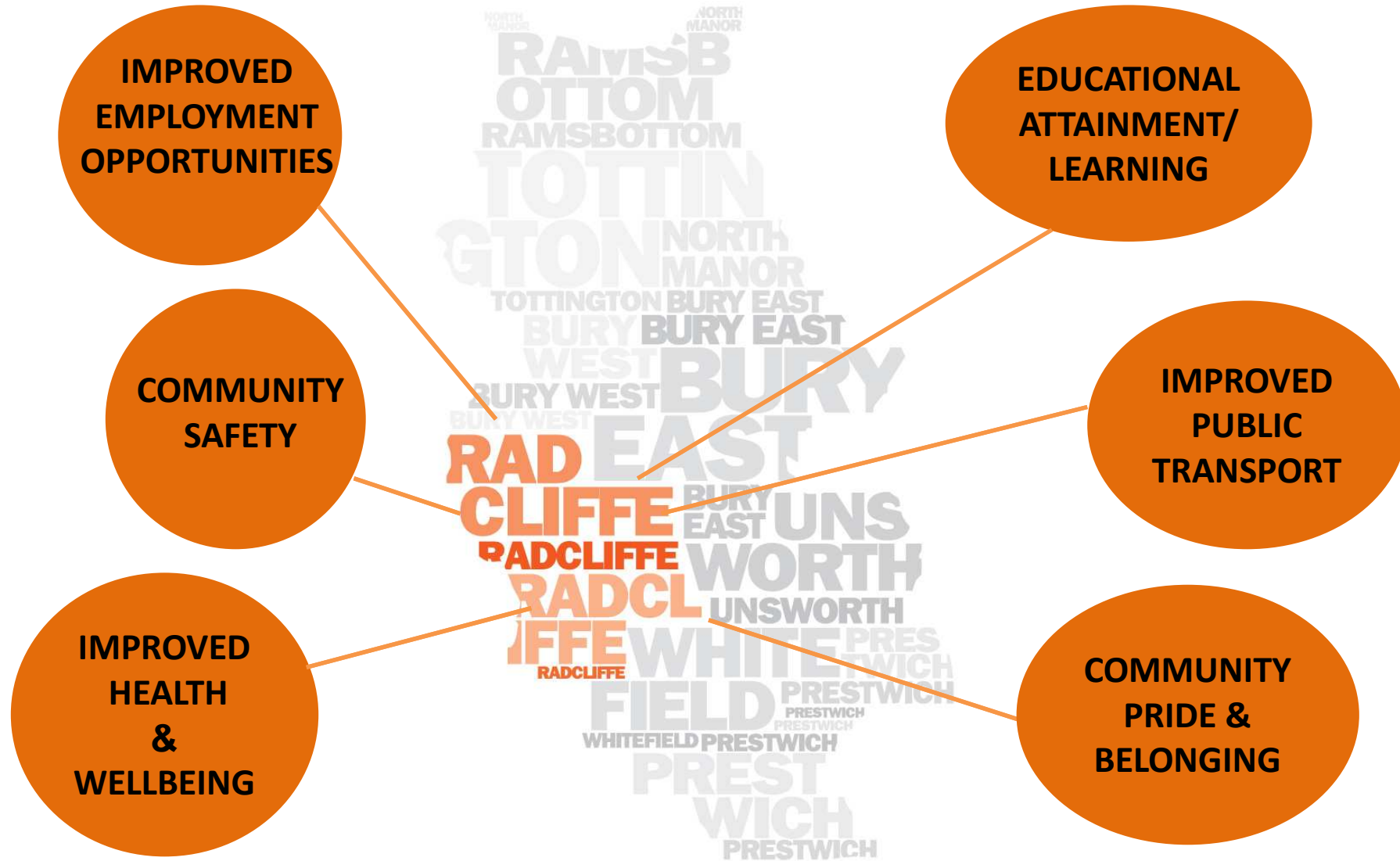
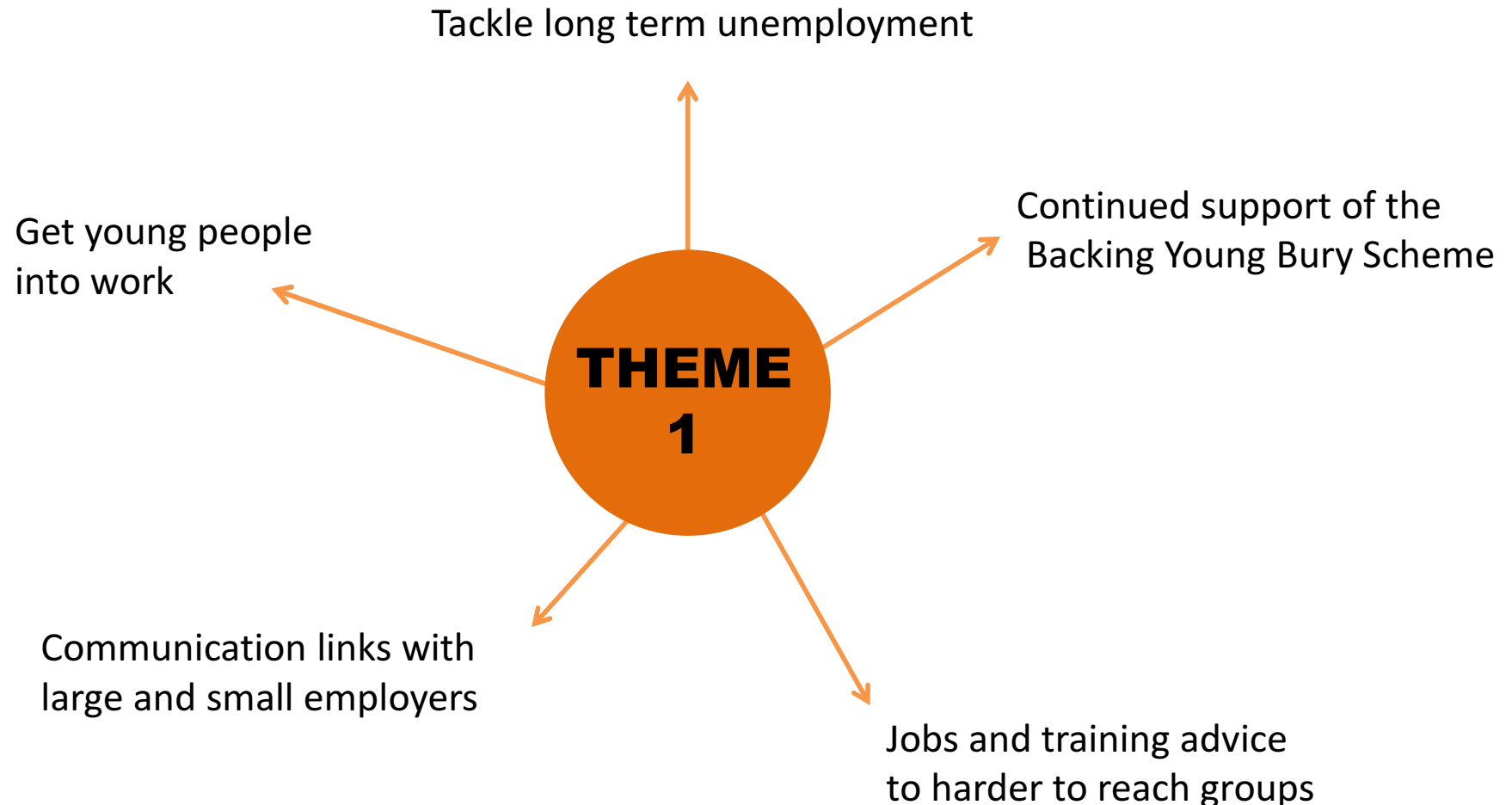


REVITALISING RADCLIFFE TOWNSHIP PLAN



Christine Maksymowski, Township Co-ordinator

IMPROVED EMPLOYMENT OPPORTUNITIES

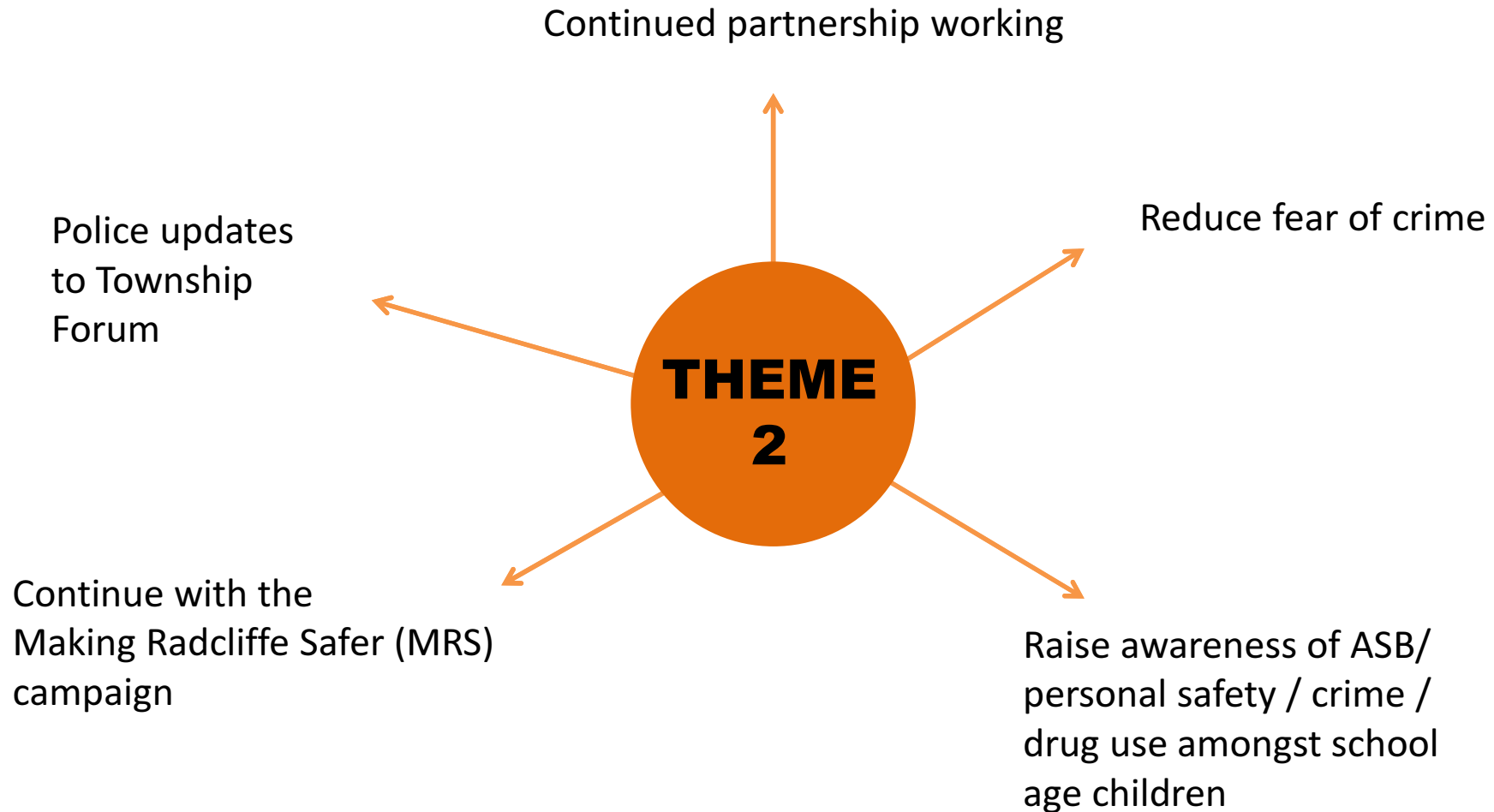


IMPROVED EMPLOYMENT OPPORTUNITIES

SUCCESS STORIES 2013-14

- Radcliffe Works to date have managed to get more than 174 young people into employment
- Weekly Job Club held at Coronation Road Children's Centre
- Backing Young Bury Careers and Skills event held in March 2014. Approx 532 young people attended this event
- As part of the Connecting Provision Trainees, 2 trainees from Radcliffe successfully completed the initial 6 week placement and 1 went on to secure a 6 month paid placement with Bury Council

COMMUNITY SAFETY



COMMUNITY SAFETY

SUCCESS STORIES 2013-14

- Successful delivery of Be Safe Be Cool project in October 2013 delivering messages on personal safety, crime, consequences of crime, anti social behaviour, peer pressure and affects of drugs and alcohol
- Weekly Community Police Surgery held at the ROC Centre
- Regular Police updates to the Township Forum
- Safe Plating and property marking days set up
- Dark Night leaflets distributed
- Township Co-ordinator attends monthly Bury South Partnership Action Group meetings to discuss individuals causing ASB

IMPROVED HEALTH AND WELLBEING

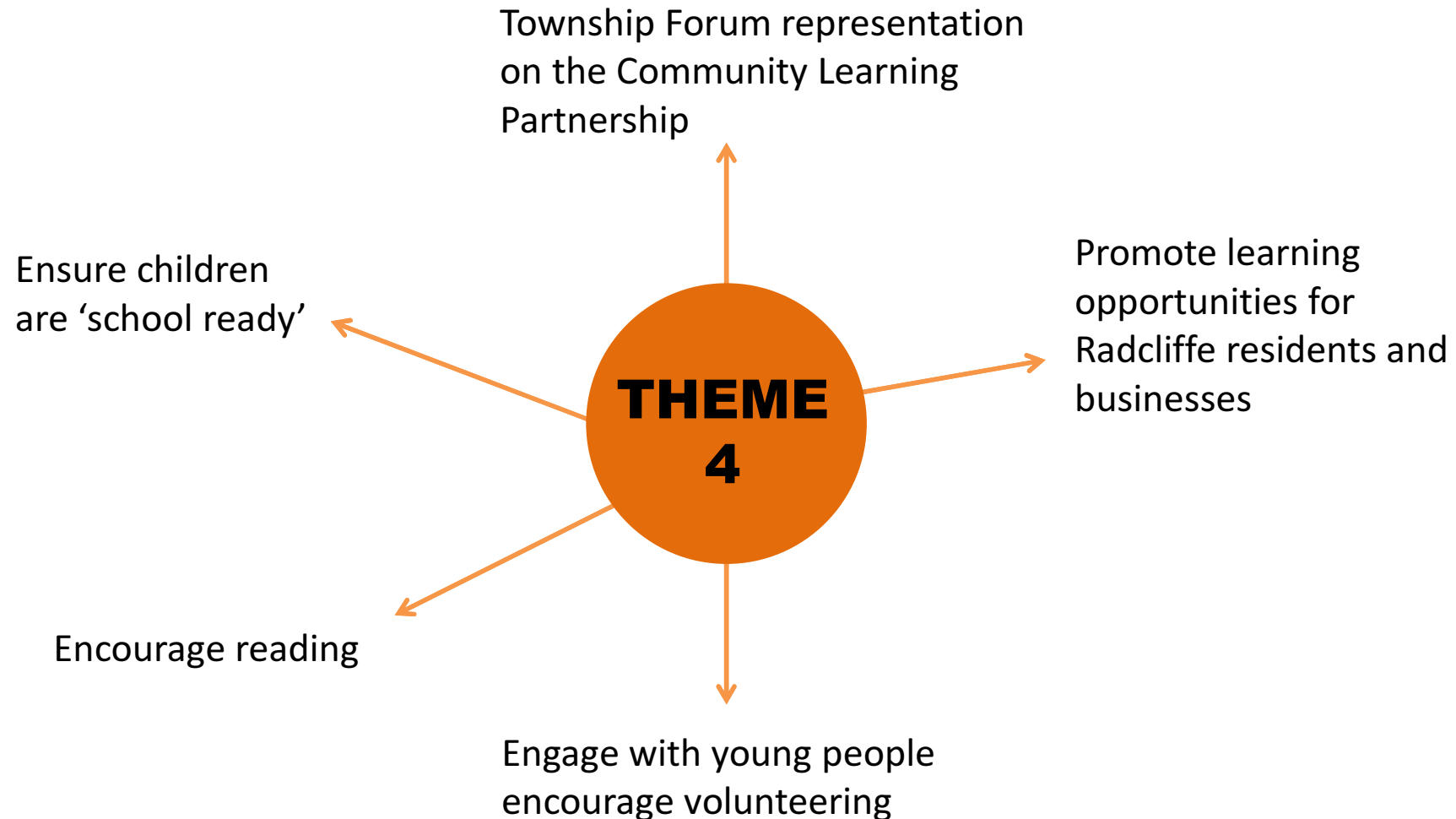


IMPROVED HEALTH AND WELLBEING

SUCCESS STORIES 2013-14

- Extended GP opening hours across Radcliffe
- Successful Our Place bid submitted and awarded £3,000. Consultation event held on 28th May 2014. Further bid for £17,000 submitted (awaiting outcome)
- Township Co-ordinator sits on the Advisory Groups for the Radcliffe Children's Centres Cluster addressing health inequalities
- ECO Toasty Campaign 2013 promoted across Radcliffe to raise awareness of fuel poverty.
- Training and educational opportunities re health and first aid delivered at the Children's Centers
- Radcliffe Township Forum supporting the I Will If You Will project with activities being delivered across Radcliffe
- Fruit and vegetable scheme being launched via the Children's Centre

EDUCATIONAL ATTAINMENT / LEARNING

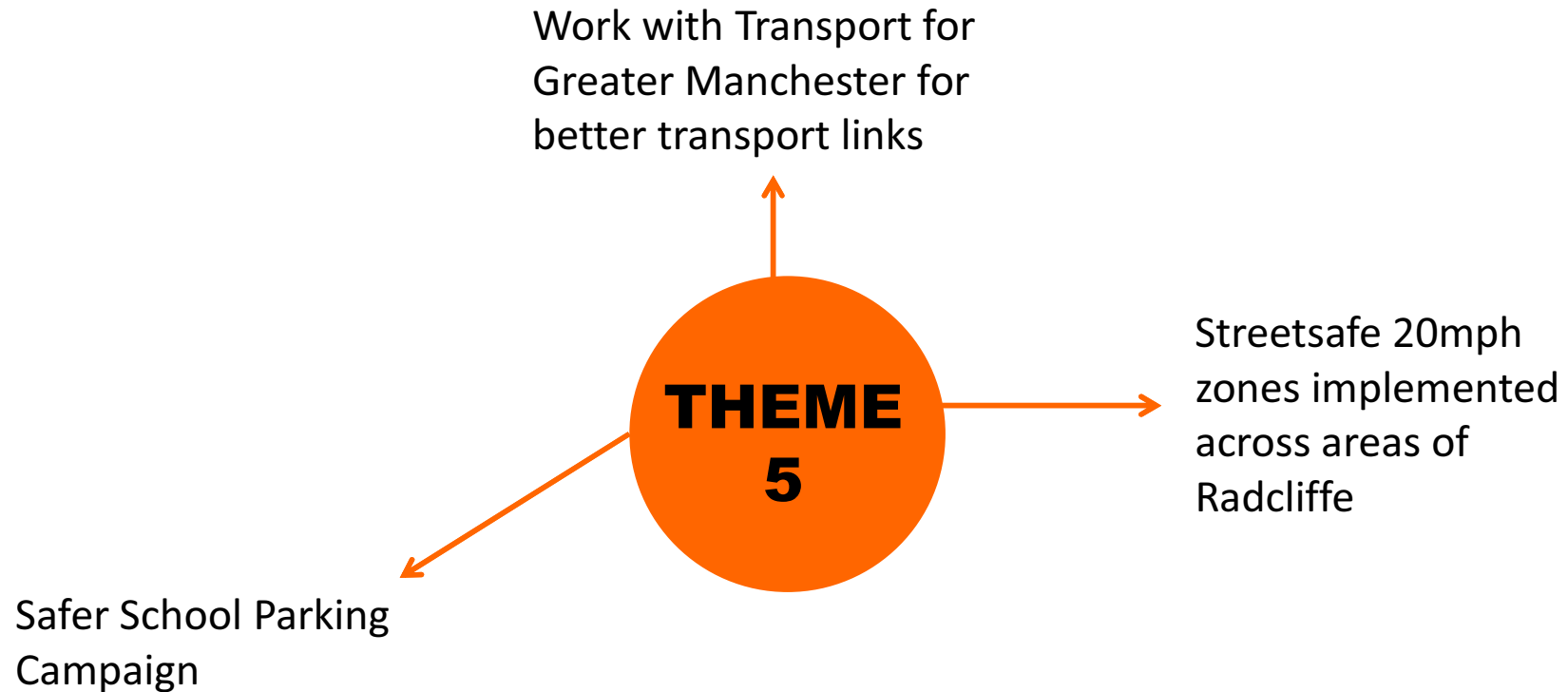


EDUCATIONAL ATTAINMENT / LEARNING

SUCCESS STORIES 2013-14

- Reading materials have been distributed to the identified families in Radcliffe
- Accredited reading course delivered to parents at the Radcliffe Children's Centre's
- Radcliffe Advisory Group Member sits on the Community Learning Partnership
- 10 week creative writing and craft workshops delivered to support the Radcliffe carnival.

IMPROVED PUBLIC TRANSPORT LINKS / ROAD SAFETY

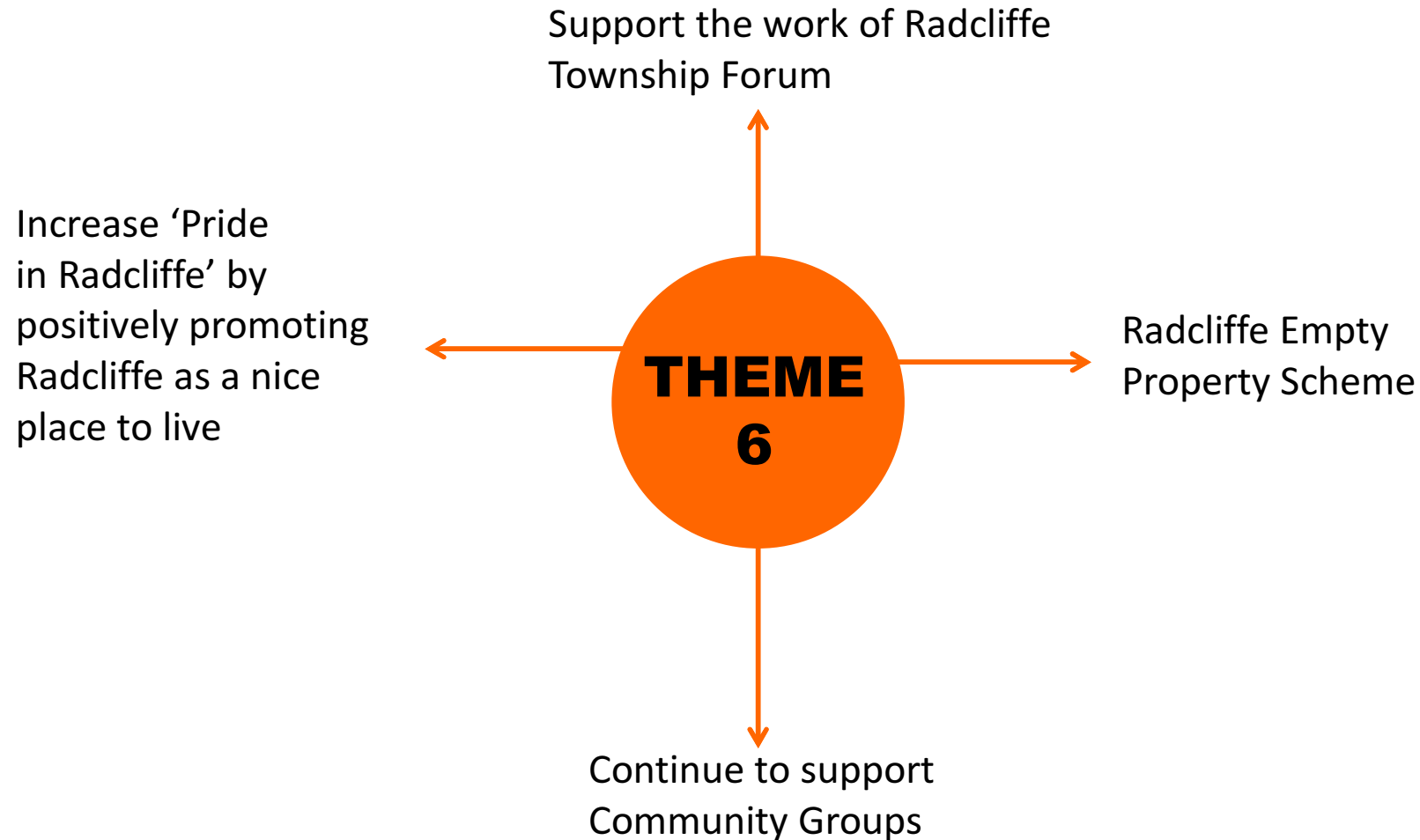


IMPROVED PUBLIC TRANSPORT LINKS / ROAD SAFETY

SUCCESS STORIES 2013-14

- Improved transport links discussed with Transport for Greater Manchester at the BRIF (Bury Rural Inequalities meeting)
- Proposals on the Streetsafe Initiative, 20mph zones across Radcliffe are currently being consulted on. Closing dates for comments is 7th July 2014
- Safer School Parking Charter launched, use of red, green and amber banners to persuade responsible driving and parking around schools

COMMUNITY PRIDE & BELONGING



COMMUNITY PRIDE & BELONGING

SUCCESS STORIES 2013-14

- Radcliffe Advisory Group Members actively involved in the Township forum
- All events have been shared with the Communication Team and members of the Township Forum
- Empty property pilot embedded in the Township Area Plan
- Community archaeological dig open day took place in Autumn 2013, involving schools, members of the public and Manchester University
- Regular feedback from Advisory Members to Township Forum

NEXT STEPS

Assess key data & identify key issues & themes for Radcliffe



Review previous Action Plan for priorities to be carried into 2014/2015



Discuss new issues & priorities



Confirm which 4/5 priorities should feature in refreshed Action Plan



Meet with Advisory Group, Elected Members and key partners



Identify 4/5 key priorities for inclusion in refreshed plan



New plan to be presented at September forum



Thank you

For taking part in revitalising your Township Plan
Your input is invaluable to ensure key priorities
are identified & addressed