

Substance Misuse

Bury's Drug and Alcohol treatment pathway

Lee Buggie & Aimee Gibson

Bury Public Health – Healthy Place

12/11/24

# Background

- Drug and alcohol misuse has a profound impact on individuals, families and communities across Bury. It directly harms individuals physical and mental health and wellbeing, and indirectly affects society through wider impacts, such as crime.
- Bury's Drug & Alcohol Partnership leads a systematic action plan aligned with the national 'From Harm to Hope' strategy, published in 2022. Four partners- Public Health, GMP, Achieve and Early Break lead on these priority areas.
- To support the delivery of the national strategy, additional funding has been provided to public health teams through an annual uplift known as Supplemental Substance Misuse Treatment & Recovery Grant (SSMTRG).
- Since April 2022, SSMTRG funding has enhanced the quality and capacity of the substance misuse offer in Bury.
- Following a successful joint proposal to OHID with the other LA's who commission GMMH, Bury have received an additional £717k for 2024/25. Currently, this grant expires 31/03/25, we are awaiting an update from OHID regarding potential extensions for the 2025/26 financial year.



## Bury commissioned services

- Bury commissions GMMH to deliver its substance misuse treatment service, known locally as [Achieve Bury](#).
- GMMH leads a partnership model and subcontracts the following providers – Early Break, Big Life and Intuitive Thinking Skills.
- GMMH deliver the adult substance misuse service and subcontracts Early Break to deliver the CYP element. Big Life provides assertive outreach support and criminal justice work, and Intuitive Thinking Skills delivers recovery-focused programmes.
- Bury Public Health also commission a range of pharmacies across the four neighbourhoods to provide supervised consumption and needle exchange to Bury clients.
- Great Places provides housing support as part of the substance misuse offer.
- Also provide Inpatient Detox and Residential Rehabilitation placements which enables individuals struggling with substance misuse to access specialist support and aftercare planning to promote long term recovery and integration into community services.

# Bury - Adults in treatment

- Latest data shows that 1,195 adults were in treatment for substance misuse issues between July 23 – June 24
- An increase of the baseline in March 2022 (946 Bury adults)

## Bury Adults in Treatment: July 2023 – June 2024

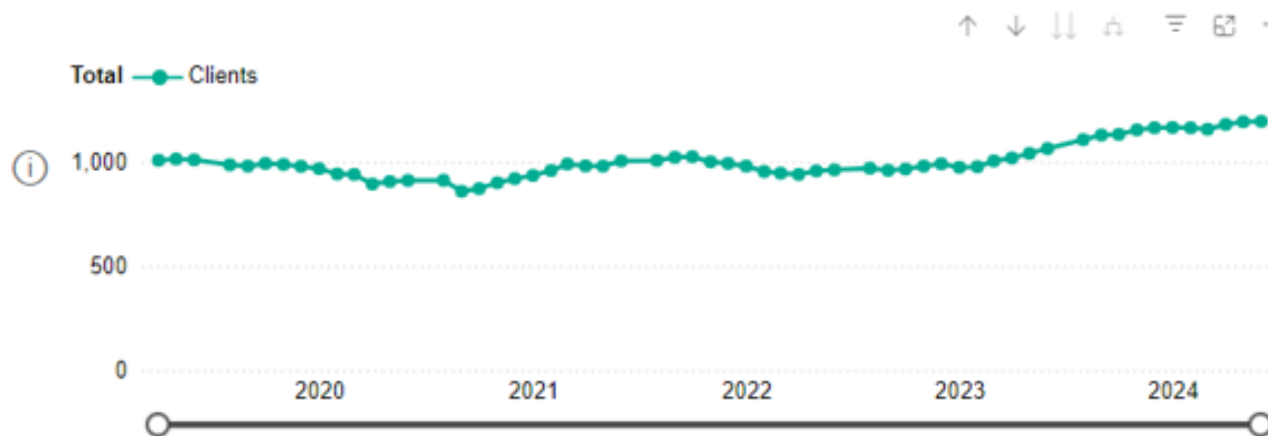
### Bury

Adults in treatment

**1,195**

Jul 2023 to Jun 2024

Baseline: March 2022  
**946**



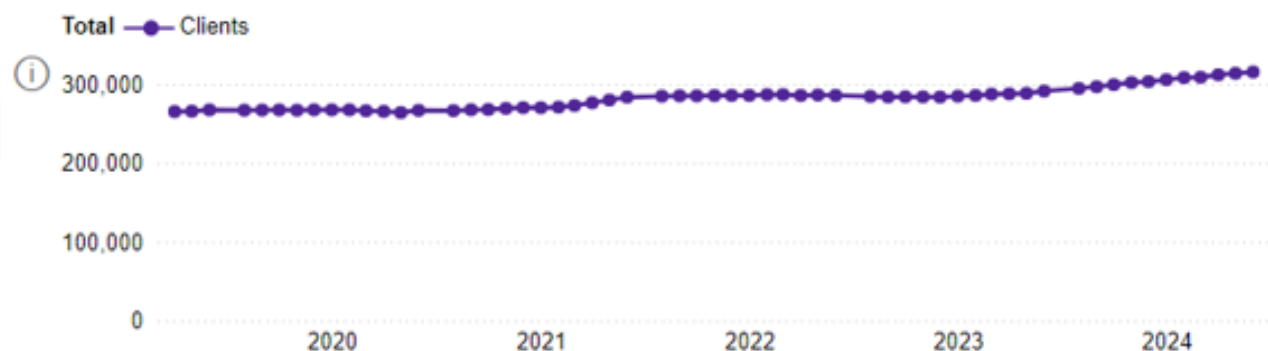
### England

Adults in treatment

**315,241**

Jul 2023 to Jun 2024

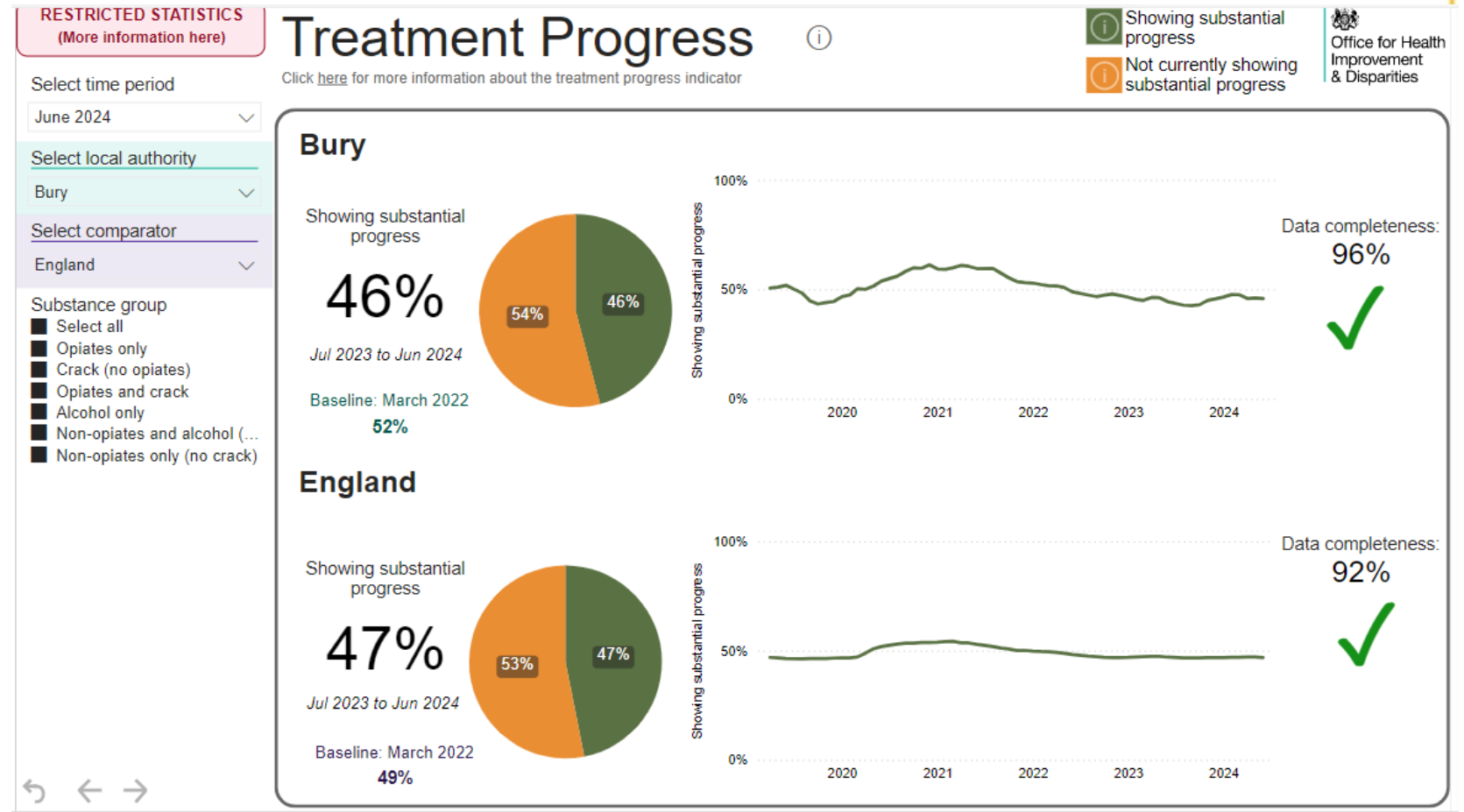
Baseline: March 2022  
**286,545**



Source: NDTMS, October 2024

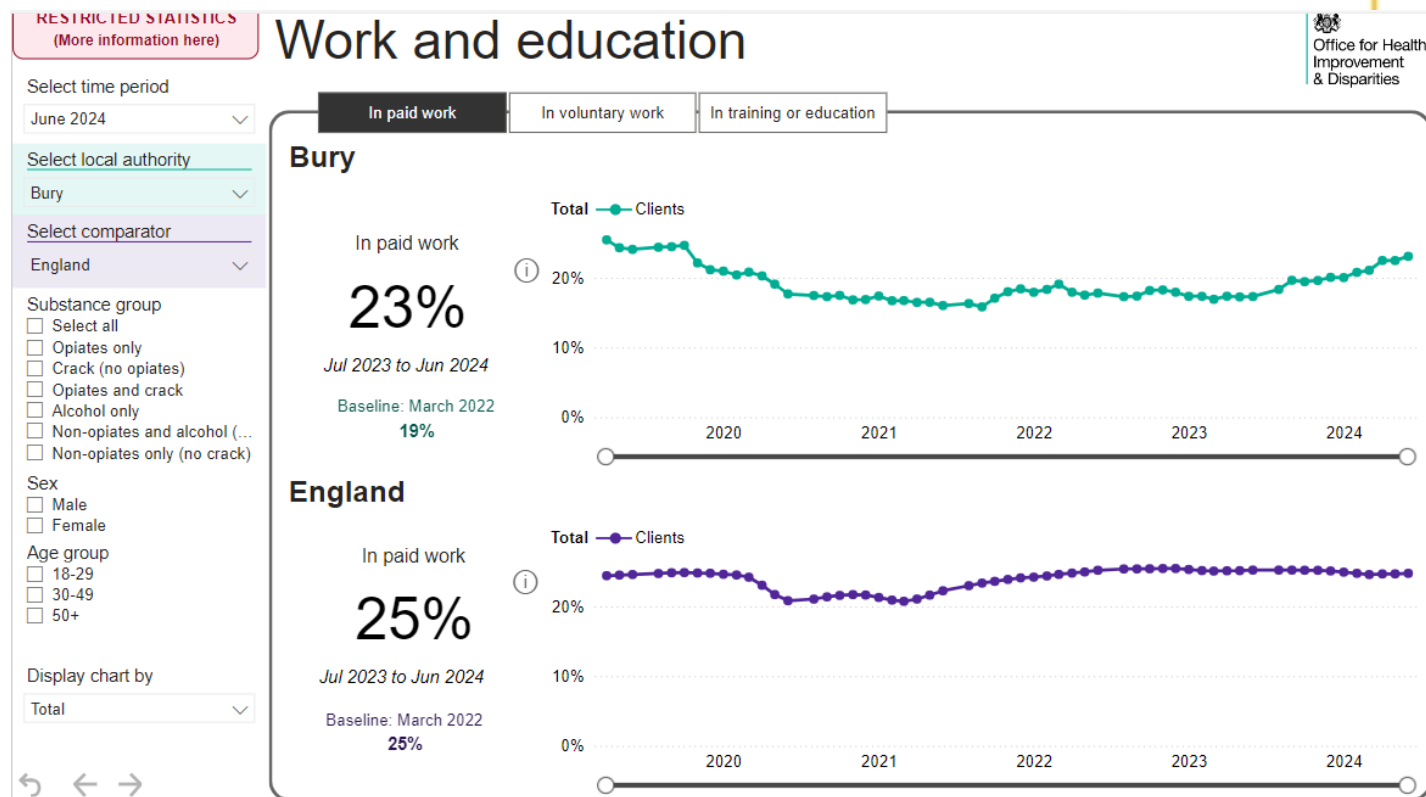
# Bury - Treatment progress

- Bury are statistically similar to the England average (47%) when looking at substance misuse treatment progress
- 46% of Bury clients demonstrated substantial progress in their recovery journey between July 23 – June 24



# Clients in service in paid employment

- Between July 23 - June 24, 23% of Bury clients in substance misuse treatment were in paid employment (265/1148), an increase of 4% compared to March 2022 baseline figure
- This is slightly less than the England average which sees 25% of clients in paid employment during the same timeframe.



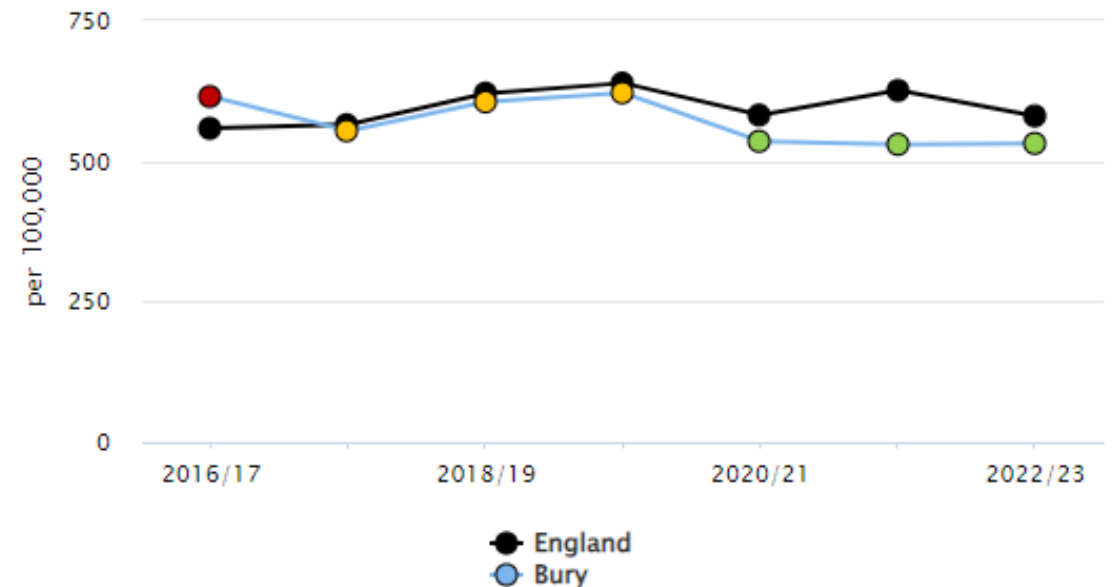
# Bury – Admissions for alcohol specific conditions

- Bury is significantly better (532 per 100,000) than the England average (582 per 100,000) for admission episodes for alcohol-specific conditions for 2022/23.
- This refers to admissions to hospital where the primary diagnosis or any of the secondary diagnoses are an alcohol-specific (i.e. wholly attributable to alcohol) condition and is a directly age standardised rate per 100,000 population.

## [Admission episodes for alcohol-specific conditions \(Persons\)](#)

[Show confidence intervals](#)

[Show 99.8% CI values](#)









Examples of Good Practice	Outcomes / Outputs
<b>Bury Drug and Alcohol Partnership</b>	The focus is to collaborate and share good practice to <b>strengthen drug and alcohol activity</b> across the borough and deliver on the local drug and alcohol action plan.
<b>Hep-C Micro elimination in Bury</b>	Over the last three years, Achieve have completed <b>over 1,000</b> tests for hep C, with <b>99%</b> of all people who are known to have a history of injecting being tested
<b>Bury Recovery Grant Fund</b>	Funding agreements have now been signed by the <b>6 x awardees</b> and funder, GMMH, are awaiting promotional material from the projects to add to the Recovery Directory.
<b>Community outreach – targeting inequalities</b>	Outreach Cafe ( <b>Radcliffe</b> ) and Huntley Mount Medical ( <b>East</b> )
<b>Bury Alcohol Matrix</b>	Next Slide - showcases the model and partner data
<b>Communities in Charge of Alcohol (CICA) Training Course</b>	Bury Adult Learning Centre (BALC) delivered their first session to 5 attendee's

# Alcohol Matrix

LSOA Code

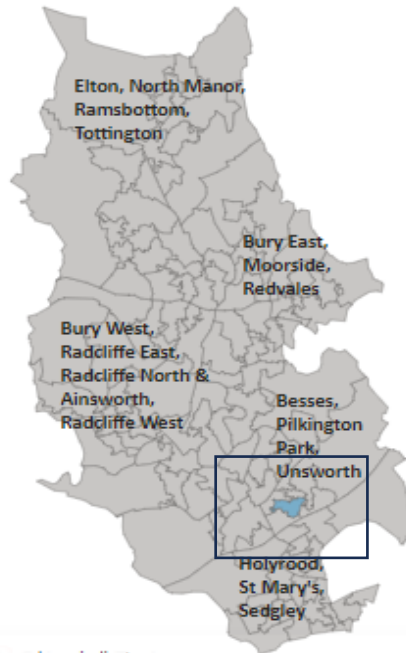
E01004944

Postcode

All

## Population

Public Health  
Licensing Matrix



Definitions

Darker colours indicate a higher population

Index of Multiple Deprivation (IMD) Decile	Value
Living Environment Decile	7
Index of Multiple Deprivation (IMD) Decile	8
Income Deprivation Affecting Older People (IDAOPI) Decile	9
Income Deprivation Affecting Children Index (IDACI) Decile	9
Income Decile	8
Health Deprivation and Disability Decile	6
Employment Decile	8
Education, Skills and Training Decile	8
Crime Decile	5
Barriers to Housing and Services Decile	7

- The Bury 021D LSOA sits within the Whitefield neighbourhood - Besses ward. The total population is 1486.
- There are 3 premise(s) selling alcohol. There are 0 premise(s) licensed for gambling in this LSOA (a premises with more than two gaming machines require a gambling license).
- During 22/23 there were 585 A&E attendances, ranked 90 of 120 LSOA's based on the rate per 1,000 population. There were 5.00\* alcohol related hospital admissions, ranked 64 of 120 LSOA's based on the rate per 1,000 population. The LSOA ranked 1 has the highest rate per 1,000 of A&E attendances/alcohol related hospital admissions.
- The IMD Decile score for this location is 8 (1 being the most deprived and 10 being the least deprived decile).
- This LSOA is ranked 104 out of 120 LSOA's for alcohol related crime, based on an annual rate per 1,000 population. It is ranked 102 for alcohol and domestic violence crimes, based on an annual rate per 1,000 population. It is ranked 78 out of 120 LSOA's for all ASB related crimes (excluding abandoned calls), based on an annual rate per 1,000 population. The LSOA ranked 1 has the highest level of alcohol related crime/alcohol and domestic violence crimes/ASB related crimes.
- This LSOA is ranked 103 out of 120 LSOA's (based on the rate per LSOA population per 1,000) for those receiving treatment for alcohol addiction for 2020-2023, with the LSOA ranked as 1 having the highest numbers in treatment.
- \*Numbers less than 5 have been suppressed and will be shown as 5.

Any questions

**Contacts :**

[l.buggie@bury.gov.uk](mailto:l.buggie@bury.gov.uk)  
[a.gibson@bury.gov.uk](mailto:a.gibson@bury.gov.uk)