

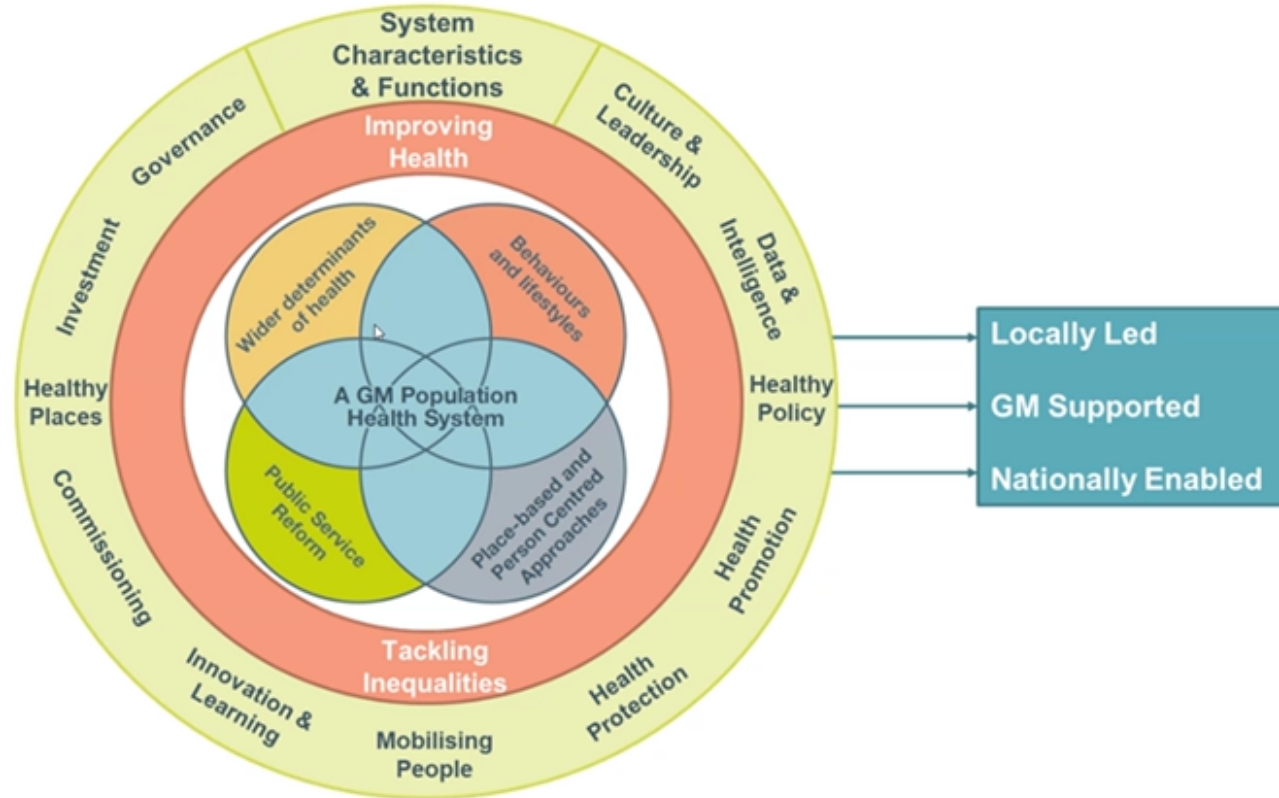
# Health and Wellbeing Board reflections and forward plan

**Bury**  
Council



Jon Hobday  
Director of Public  
Health

## GM Population Health Model



**Bury**  
Council

# Areas discussed in 2024

- **Wider determinants**
- Anti-Poverty Update (Jan 2024)
- Mental Health Complex System Mapping (Jan 2024)
- Economic Development Strategy (March 2024)
- Bury Public Health Annual Report 2023-2024 (Sept 2024)
- Draft Child Death Overview Panel (CDOP) Annual Report 2023-2024 (Sept 2024)
- GM Population Health Model (Nov 2024)



# Areas discussed in 2024

- **Behaviour and lifestyles**
- Obesity and the Neighbourhood Approach (March 2024)
- Drug and Alcohol Related Harm Plans (Nov 2024)
- Update on Smoking Legislation (Nov 2024)



# Areas discussed in 2024

- **The operation of the health and care system**
- Workforce Development – Building Public Health Capacity and Capability (Jan 2024)
- Better Care Fund Quarterly Report (March and September 2024)
- Outcome Framework Update (March 2024)
- Workwell Partnership Vanguard – Locality Update for Bury (Sept 2024)



# Areas discussed in 2024

- **Place based and person-centred approaches**
- Health Inequalities Update (Jan 2024)
- PSLT Work and Place Based Plans in Practice (Sept 2024)
- Bury Homeless Partnership (Nov 2024)



# Reflections

- Topics discussed reflect the key drivers for reducing inequalities
- Useful to have this forum to challenge, support and promote the ongoing work



# Forward plan for 2025

- **Wider determinants**
  - Culture strategy and plans
  - Crime and community safety plans
  - Housing strategy and plans
  - Homelessness partnership work
- **Behaviours and lifestyle**
  - Physical activity framework
  - Obesity and healthy weight
  - Food strategy progress
  - Smoking action plan update
  - Update on approach to drugs and alcohol





# Forward plan for 2025

- **The operation of the health and care system**
  - Health protection annual report – including an update on immunisations, vaccinations and screening
  - Better Care Fund updates
  - Safeguarding annual report
  - Health watch annual report
- **Place based and person-centred approach**
  - Public Service Leadership Team update
  - Prevention review
  - Public Health Annual Report
  - VCSE and volunteering's contribution to health
  - Parks and green spaces, playing pitch and facilities strategies update



## Key questions

- Thoughts on the progress of the board?
- Is there anything we are missing on the forward plan?
- What more can we be doing as a board to address inequalities?

