


Meeting:	The Council
Meeting date:	17 th September 2025
Title of report:	Update on Greater Manchester Joint Authorities Activity 
Report by:	Leader of the Council
Decision type:	Non key decision
Ward(s) to which the report relates:	All
Summary:	This report provides an update on the activity of the Greater Manchester Combined Authority.

1. Background

This report provides an update on work of the Greater Manchester Combined Authority (GMCA) and other Greater Manchester joint authorities following an update to Council in July 2025.

The council has agreed a specific area of focus for each update, This update will cover the work of the ICP (Integrated Care Partnership)

2. GMCA ICP

Greater Manchester Integrated Care Partnership (Greater Manchester ICP) brings together all health and social care partners across Greater Manchester and wider public sector and community organisations to improve the health and wellbeing of the 2.8 million people who live in Greater Manchester.

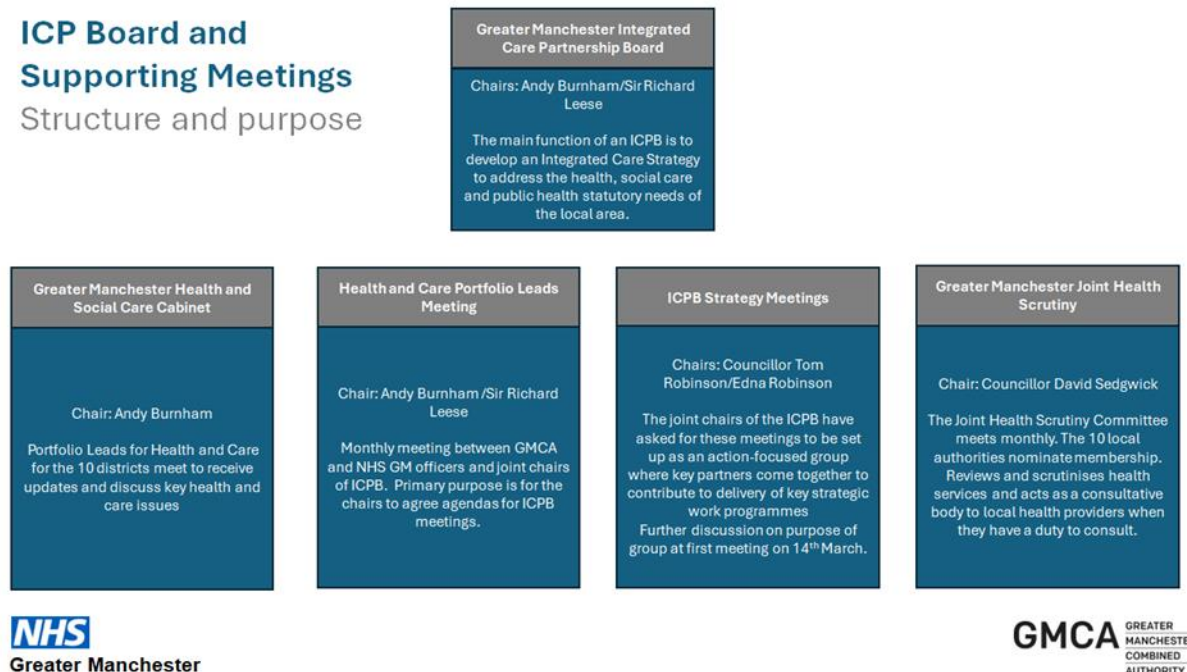
Greater Manchester ICP connects NHS Greater Manchester, the Greater Manchester NHS Trusts and NHS providers across the whole of primary care with the Greater Manchester Combined Authority, 10 local councils and partners across the Voluntary, Community, Faith, and Social Enterprise (VSCFE) sector, the 10 local Healthwatch and the Trades Unions.

The Work of the Integrated Care Partnership Board

The primary role of the ICP Board is to develop an integrated care strategy for Greater Manchester. The ICP Strategy was launched in March 2023. Since then, the Board has focused on convening the GM system to deliver the ICP Strategy in the context of the overarching Greater Manchester Strategy (GMS). Principally, the Board has done this through the lens of the six missions agreed in the ICP Strategy:

- Strengthen our communities
- Help people get into – and stay in – good work
- Recover core NHS and care services
- Help people stay well and detect illness earlier
- Support our workforce and our carers
- Achieve financial sustainability

In September 2024, the ICP Board agreed new joint chairs: Andy Burnham (Mayor of Greater Manchester) and Sir Richard Leese (Chair of NHS Greater Manchester). During this year, the Board has agreed a new structure of supporting meetings recognising the importance of continued engagement with partners – in particular, political leadership. This structure is shown below:



The newly established ICPB Strategy meetings provide an opportunity for ICPB members to carry out deeper dives into specific topics of interest to support the fulfilment of the ICPB purpose and function. Similarly, a Greater Manchester Health and Social Care Cabinet has been set up this year for health and care portfolio leads from the 10 districts, and the Mayor, to discuss key issues.

Over the last year, the ICPB and its supporting meetings have brought together partners on major strategic priorities, including:

- The new Greater Manchester Strategy
- The new 10-year Health Plan
- GM Live Well
- The Prevention Demonstrator
- Neighbourhood working
- Urgent and Emergency Care
- Primary Care
- The role of the VCFSE

Transport for Greater Manchester Update

Improving the Bee Network

- The latest allocation of £20.7 million of funding to support walking, wheeling and cycling [was approved](#) by members of the Greater Manchester Combined Authority in August. This comes after Greater Manchester Mayor Andy Burnham committed to giving more healthy and green travel options to millions of residents across the city-region. The latest round of funding will support a range of interventions, including:
 - Active travel infrastructure - £8.6m for improved or replaced surfacing for walking, wheeling and cycling, new crossings and upgraded junctions, bus stops and traffic management.
 - School Streets - £2m towards maintenance on highways near to schools such as dropped kerbs, improvement of pavements and footpaths and traffic management.
 - Bee Network crossings- £2m for new or upgraded traffic signal junctions near schools.
 - Cycle hire - £1.5m towards new e-bikes and the extension of the existing Starling Bank Bike hire contract to 2028, to continue enhancing the fleet and with the potential to expand the footprint of the existing scheme.
 - Community-led schemes – £1.7m for schemes that help people make the switch to active travel, including bike libraries, walk to school and learn to ride schemes.
 - Bee Network scheme development – £2.2m for new Local Authority-led active travel schemes.
 - Remedial works – £1.1m for the maintenance and renewal of existing active travel schemes, including changes to existing paths and routes and addressing access issues that prevent those with mobility needs from using certain routes.
 - A further £500,000 was approved for both secure cycle parking and new route signage.
- Two new hourly night buses services are [proposed](#) on the 135 (Manchester – Prestwich – Bury) and the 17/17a (Manchester – Middleton – Rochdale) which would connect Bury and Rochdale town centres with Manchester city centre. The new routes will initially run

on Thursday, Friday and Saturday nights. This reflects patronage trends which show that demand is expected to be initially lower at the start and middle of the week.

- Around 150,000 18–21-year-olds in Greater Manchester will benefit from half price Bee Network bus travel, better connecting them to work, training or education opportunities. [Set to launch](#) on 1 September 2025, young people will be able to buy a 28-day bus travelcard for £40 - half the adult fare price they would normally pay.
- Speeding drivers in Greater Manchester are now more likely to be caught as part of [new investment](#) in the region's safety camera network to improve road safety and support Vision Zero, the ambition to end all road fatalities and life-changing injuries by 2040. The upgraded cameras can capture two-way traffic and use low-light infra-red, meaning they will no longer flash at speeding drivers. There are now 88 upgraded spot speed and currently installing 25 average speed routes across Greater Manchester.
- Air quality across Greater Manchester is getting better thanks to investments in cleaner public transport. Newly-released figures show that air pollution dropped again in 2024 in the city region. [The latest report](#) shows that 38 places had illegal levels of nitrogen dioxide, down from 64 in 2023 and 129 in 2019. As part of Greater Manchester's accelerated investment in public transport, the Bee Network is helping reduce air pollution by introducing more low and zero-emission buses.
- At its meeting in July, the Bee Network Committee [approved](#) a series of funding allocations from Greater Manchester's City Region Sustainable Transport Settlement. This is set to support a wide range of interventions to improve how people move around the city region - whether by bus, bike, tram, or on foot. This includes GM wide improvements relating to:
 - Bus stop upgrades – £4.5m. More than 220 bus stops will be enhanced with new shelters, raised kerbs, better road markings, and improved walking routes - making bus travel more comfortable and accessible for everyone.
 - Passenger Information Displays – £2.7m. Real-time travel information is coming to 319 bus stops locations and five transport interchanges, helping passengers plan their journeys with confidence.
- Transport for Greater Manchester has [started](#) a procurement process to deliver up to £1.6bn of infrastructure that will help to maintain and grow Metrolink and improve rail accessibility within Greater Manchester. The contract covers Metrolink's asset renewals programme, which includes replacing key infrastructure – such as track, overhead lines and the distribution system that provides power to trams.
- Around 400,000 older and disabled people in Greater Manchester have been able to benefit from round-the-clock concessionary bus travel as part of a [new pilot](#) in August. The pre-9.30am travel restriction has been lifted on a trial basis for a month on all buses for those with a TfGM-issued concessionary travel pass. The trial is being held to look at the impact of lifting the 9.30am restriction on peak bus services and those shortly after 9.30am. At the conclusion of the trial, the evidence gathered during it, including analysing passenger feedback, patronage and pass usage, will be assessed before a decision is made on whether the move can be made permanent.

Network Updates

- Punctuality of the first buses to come under local control (tranche 1, which includes some Bury services) is now consistently above 80%, with recent data from tranches 2 (including the remainder of Bury services) and 3 also showing this target being met on a regular basis. This is up from an average of c69% pre-franchising. The latest punctuality report (published weekly [here](#)) during the period 17-23 August shows the following:
 - Tranche 1 punctuality: 88.2%
 - Tranche 2 punctuality: 83.0%
- As part of the ongoing programme of maintenance and renewal works across the Metrolink network there has been work on the Bury line to replace beams in the Whitefield Tunnel. This work has been delayed due to the discovery of bats in the tunnel but is now scheduled to take place in late October.
- Aimed at delivering joined-up, reliable services, a programme of local bus network reviews continues. Network Reviews will explore how buses can better serve communities, making improvements that would not have been possible before franchising. Work on the Bury network progressed through initial engagement in late 2024, and we have now undertaken a detailed GM-wide connectivity assessment, identifying gaps and opportunities in the current provision. An overview of the assessment as well as a revised process for taking forward changes was considered by the Bee Network Committee in June. Subject to approval, further engagement will follow later in 2025.

Wider local updates

- Bury Interchange – The planning application to create a new southern access to Metrolink (including a footbridge, lift and stairs) was approved by Bury Council on 22 July. TfGM are continuing to develop the design for the main interchange in partnership with Bury Council and other stakeholders. The opportunity to include a residential development alongside the interchange continues to be developed, with initial design work progressing.
- Elton Reservoir New Stop – TfGM are continuing development work on proposals for a new Metrolink stop, Travel Hub and Park & Ride, to be delivered as part of the strategic allocation for circa 3500 homes and supporting infrastructure, identified in Places for Everyone. Updated designs for the stop and Travel Hub/Park & Ride area have been developed and will be shared with the master planning consultant and other stakeholders for review shortly. The designs support and maximise benefits associated with the wider scheme (for instance by supporting increased housing density around the Metrolink stop area).
- Metrolink Stop Improvements Programme – Heaton Park Phase 1 (shelter improvements) has received “Programme Entry”. Approval secured to submit an Invitation to Tender for a contractor to construct Phase 1. Parallel combined outline/final business case work to be progressed.

Recycle for Greater Manchester Update

Food Waste Insight

We've recently conducted a poll to provide insight into resident attitudes and behaviours around food waste. We polled a demographically representative sample of 1,516 residents of Greater Manchester, including 122 Bury residents. The poll included eight questions across a range of food waste topics, including participation, collections, caddy liners, barriers and motivations to recycling food waste.

Some of the key insights were that older residents and families with children are more likely to recycle food waste, whereas residents in flats and from Asian communities are less likely to do so. Additionally, Bury residents were more likely to not recycle food waste due to lack of space.

We also measured food waste recycling against other common household items including cardboard, glass and plastics. Results suggest that around 76% of Bury residents are currently recycling food waste, compared to 95% who recycle paper and cardboard.

Insights gathered will help inform a new food waste campaign aimed at encouraging food waste recycling participation amongst residents who already recycle at home. An infographic featuring specific data on Bury residents is currently being prepared to be shared with colleagues at Bury Council.

Library Sessions

As mentioned in our June report, visits to our Education Centre at Longley Lane Household Waste Recycling Centre from Bury residents have been lower than in other areas of Greater Manchester. To help boost numbers, our Education team have put on a number of bespoke sessions in Bury libraries to coincide with the summer holidays.

We've ran two library sessions in Bury over the summer – in Prestwich and Ramsbottom. We took recycling games and colouring sheets for younger children whilst older children and adults played our 'Right Stuff Right Bin' sorting game. This game prompts lots of discussion about the right way to dispose of everyday items.

At our sessions across Bury, residents were really eager to know what happens to their waste. We spoke to a number of residents about Greater Manchester having such a

high recycling rate for an urban area, which most residents seemed very motivated by. These sessions worked well and we're aiming to do more throughout the year. If you would like to visit our Education Centre or know of a group we could visit in Bury, please contact education@recycleforgreatermanchester.com

Bury Hospice

[Social value is an important part of GMCA's contract with SUEZ](#). As part of their social value commitments, SUEZ work with a local charity each quarter, providing support and encouraging their team to volunteer. One of this year's charities is Bury Hospice.

In June, SUEZ visited the Hospice and met with the Fundraising Director. From there, a plan of activity was created. This included 12 SUEZ staff volunteering at the Hospice Warehouse - supporting retail operations and assembling flat-pack furniture. Nine SUEZ staff volunteered at Bury Hospice Gardens in May; weeding and planting. This was supported by the donation of one tonne of compost to assist with further garden activity. Another volunteering day is scheduled for October.

There are also plans for some of the team from Bury Hospice to visit the Renew Hub in the Autumn to collect some furniture donated by residents of Greater Manchester at our 20 household waste recycling centres. This will either be used directly in the Hospice or sold in Hospice shops to raise vital funds for the ongoing work.

Recycling Centre Rates

Site	Jun 25	Year to date
Cemetery Rd, Radcliffe	63%	64%
Every St, Fernhill	64%	64%

Contact RFGM:

<https://recycleforgreatermanchester.com/>

Email: recycle4gm@greatermanchester-ca.gov.uk

Michelle Whitfield

Head of Communications & Behavioural Change

Michelle.whitfield@greatermanchester-ca.gov.uk

GMCA meetings:

Greater Manchester Combined Authority Meeting (August)

A link to the papers are available here:

[Greater Manchester Combined Authority - Friday, 22nd August 2025](#)

Items considered and decisions included:

GMCA Waste & Recycling Committee - 2 July 2025	<ol style="list-style-type: none"> 1. That the proceedings of the meeting of the GMCA Waste & Recycling Committee held on 2 July 2025 be noted. 2. That the appointment of Councillor Alan Quinn as the Chair of the Waste & Recycling Committee for 2025/2026 be approved. 3. That the appointment of Councillor Lee-Ann Igbon as Vice Chair of the Waste & Recycling Committee for 2025/2026 be approved.
GMCA Audit Committee - 23 July 2025	<ol style="list-style-type: none"> 1. That the proceedings of the meeting of the GMCA Audit Committee held on 23 July 2025 be noted.
GMCA Overview & Scrutiny Committee - 25 June & 23 July 2025	<ol style="list-style-type: none"> 1. That the proceedings of the GMCA Overview & Scrutiny Committee meetings held on 25 June and 23 July 2025 be noted.
Bee Network Committee - 24 July 2025	<ol style="list-style-type: none"> 1. To note the proceedings of the Bee Network Committee held on 24 July 2025.
Greater Manchester Appointments Update 2025/26	<ol style="list-style-type: none"> 1. That the proceedings of the Bee Network Committee meeting held on 24 July 2025 be noted.
Greater Manchester Appointments Update 2025/26	<ol style="list-style-type: none"> 1. That the appointment of 15 substitute members to the GMCA Waste and Re-cycling

	<p>Committee be deferred until the September meeting of the GMCA.</p> <ol style="list-style-type: none"> 2. That Cllr Les Webb (Bolton) be appointed as a substitute member of the Bee Network Committee. 3. That it be noted that the GM Mayor has appointed the following members to the Bee Network Committee – Cllr Peter Crossen (Stockport, Conservative), Cllr Max Woodvine (Oldham, Conservative), Cllr Howard Sykes (Oldham, Lib Dem) and Cllr Jon Byrne (Stockport, Labour). 4. That a Cllr Ian Hunter (Stockport, Lib Dem) be appointed as a member of the GMCA Audit Committee. 5. That Cllr Nathan Evans (Trafford) and Cllr Joanne Marshall (Wigan) be appointed as members of the GMCA Overview & Scrutiny Committee. 6. That Cllr Ashley Dearnley (Rochdale) be appointed as a substitute member of the GMCA Overview & Scrutiny Committee. 7. That the appointment of Cllr John Vickers (Wigan) as a substitute member to the GM Joint Clean Air Scrutiny Committee be noted. 8. That the appointment of Cllr Hamid Khurram (Bolton) as substitute member of the Air Quality Administration Committee be noted.
GM Housing and Planning Commission: Terms of reference	<ol style="list-style-type: none"> 1. That the change of name from the GM Planning & Housing Commission to the Housing First, Planning and Infrastructure Commission be approved. 2. That the Terms of Reference be approved.
Faith, Belief and Interfaith Covenant	<ol style="list-style-type: none"> 1. That the progress of the Faith, Belief and Interfaith Covenant be noted. 2. That opportunities be championed for implementation of the Covenant in portfolios and localities, including the role of local Interfaith Networks. 3. That the comments received from Rev. Ian Rutherford and Councillor Eve Parker be welcomed. 4. That the Trafford Faith Action Network be highlighted as a strong template which other GM localities were encouraged to use as an exemplar model.
Equalities Panel Annual Report	<ol style="list-style-type: none"> 1. That the activity and impact of the Equality Panels be noted. 2. That endorsement be given by all portfolios to proactively engage with Equality Panels on issues that impact communities-of-identity. 3. That the comments received from Co-Chair of the Race Equality Panel Paula Watt be welcomed.
Greater Manchester's Remediation Acceleration Plan: Ensuring Fire Safety in Flats as part of the Response to Grenfell	<ol style="list-style-type: none"> 1. That the contents of the Greater Manchester Remediation Acceleration Plan and delivery arrangements be noted and that the Plan be endorsed.

	<ol style="list-style-type: none"> 2. That members be asked to take part in lobbying the insurance industry on the urgent need to train more class 3 building inspectors.
Greater Manchester Local Nature Recovery Strategy	<ol style="list-style-type: none"> 1. That the Greater Manchester Local Nature Recovery Strategy be endorsed. 2. That it be recommended that the Mayor approves the Greater Manchester Local Nature Recovery Strategy for publication, in his capacity as Responsible Authority for Greater Manchester. 3. That the comments highlighted by Natural England representatives be noted. 4. That members emphasised the importance of green spaces within all the region's communities, particularly those areas most at risk of becoming 'urban heat islands'.
Our Pass Digitalisation: Introduction of a New Product for 18-21 year olds to Increase Access to Public Transport through Affordable and Simpler Fares and Ticketing	<ol style="list-style-type: none"> 1. That the introduction of a half price 28-day Bee Bus ticket for 18–21-year-olds living in Greater Manchester be approved. 2. That the delivery of Digital Our Pass be noted.
Active Travel Funding for Schemes	<ol style="list-style-type: none"> 1. That the allocation of £5.2m revenue funding, consisting of Active Travel Fund 4, Active Travel Fund 5 and the Consolidated Active Travel Fund be approved as follows: <ul style="list-style-type: none"> - Bee Network scheme Development (Local Authority led): £2.22m; - Behaviour Change: £1.74m; - Cycle Hire: £1m; and - Programme Management and Network Monitoring: £0.201m 2. That the allocation of £15.2m capital funding, consisting of Active Travel Fund 5 and the Consolidated Active Travel Fund be approved as follows, noting there is a further £1.5m capital funding to be allocated by GMCA at a later date: <ul style="list-style-type: none"> - Active Travel Infrastructure Pipeline Delivery: £8.6m; - School Streets: £2m; - Bee Network Crossings: £2m; - Remedial Works: £1.1m; - Cycle Hire: £0.5m; - Secure Cycle Parking: £0.5m; - and Wayfinding: £0.5m 3. That the associated drawdown requests in relation to the capital allocations will be considered by the Bee Network Committee at the meeting held on Tuesday 19th August 2025, subject to GMCA approval of the overall allocations be noted.
Business Case Development for Rapid Transit Lines in Greater Manchester	<ol style="list-style-type: none"> 1. That the contents of the report be noted. 2. That the next steps be endorsed. 3. That the Group Chief Executive be requested to look at the possibility of using 'right to request' to acquire further funding to support Access for All.

GM Local Investment Framework - Approval Recommendations	<ol style="list-style-type: none"> 1. That a loan of up to £600,000 to Social AdVentures Limited be approved. 2. That a loan of up to £150,000 to Insightful Brands Ltd be approved. 3. That an investment of up to £150,000 to Gennate Limited be approved. 4. That an amendment to Evergreen House Limited loan be approved. 5. That the delegated approval of a loan of up to £450,000 to Ecobelt Limited, a loan of up to £370,000 to United Canning Limited and an investment of £50,000 to 9N Limited be noted. 6. That authority be delegated to the Combined Authority Treasurer in consultation with the Combined Authority Monitoring Officer to review the due diligence information in respect of the above investments, and, subject to their satisfactory review and agreement of the due diligence information and the overall detailed commercial terms of the investments, to sign off any outstanding conditions, issue final approvals and complete any necessary related documentation in respect of the investments noted above. 7. That it be noted that going forward an annual impact report will be prepared for the GMCA which will highlight examples of job creation made possible through the GM Local Investment Framework.
Northern Gateway Mayoral Development Corporation - Consultation Outcomes	<ol style="list-style-type: none"> 1. That the results of the consultation exercise in respect of the designation of a Mayoral Development Corporation for Northern Gateway be noted. 2. That the Mayor's response to the consultation be noted. 3. That it be noted that recommendations to support the designation of the 'Atom Valley Northern Gateway' MDC were approved by Bury and Rochdale Councils at their meetings on 9 July 2025 and 29 July 2025, respectively 4. That due consideration be given to the proposal by the Mayor to designate an area, identified on the plan at Appendix 3, as a Mayoral Development Area and notify the Mayor within the consideration period if it proposes to reject the proposal. 5. That it be noted that subject the GMCA not rejecting the proposal as set out at recommendation 4 above, the Mayor shall publicise the designation, notify the Secretary of State of the designation and the name to be given to the Mayoral Development Corporation, as follows: "Atom Valley Northern Gateway Mayoral Development Corporation."

3. Recommendation(s)

- 3.1. That Council note the updates from the Greater Manchester Combined Authority, Transport for Greater Manchester, and Recycle for Greater Manchester, with further updates to be presented to future Council meetings

List of Background Papers:-

Minutes of GMCA meetings linked throughout.

Contact Details:-

Alexander Burchell
Leaders Executive Officer
a.burchell@bury.gov.uk